

10 H 324 - Sec.

1055 - 1010 10 - 11

93

LEVEL BOOK

1307

PLEASE RETURN TO
GEAUGA COUNTY ENGINEER
COURT HOUSE
CHARDON, O.
PHONE 250-X

Bass Lake Road - No. 23

Sections - ?

X-Sections - pg - 7-62

Benchmarks - pg - 1-4

Culverts - pg - 737-143

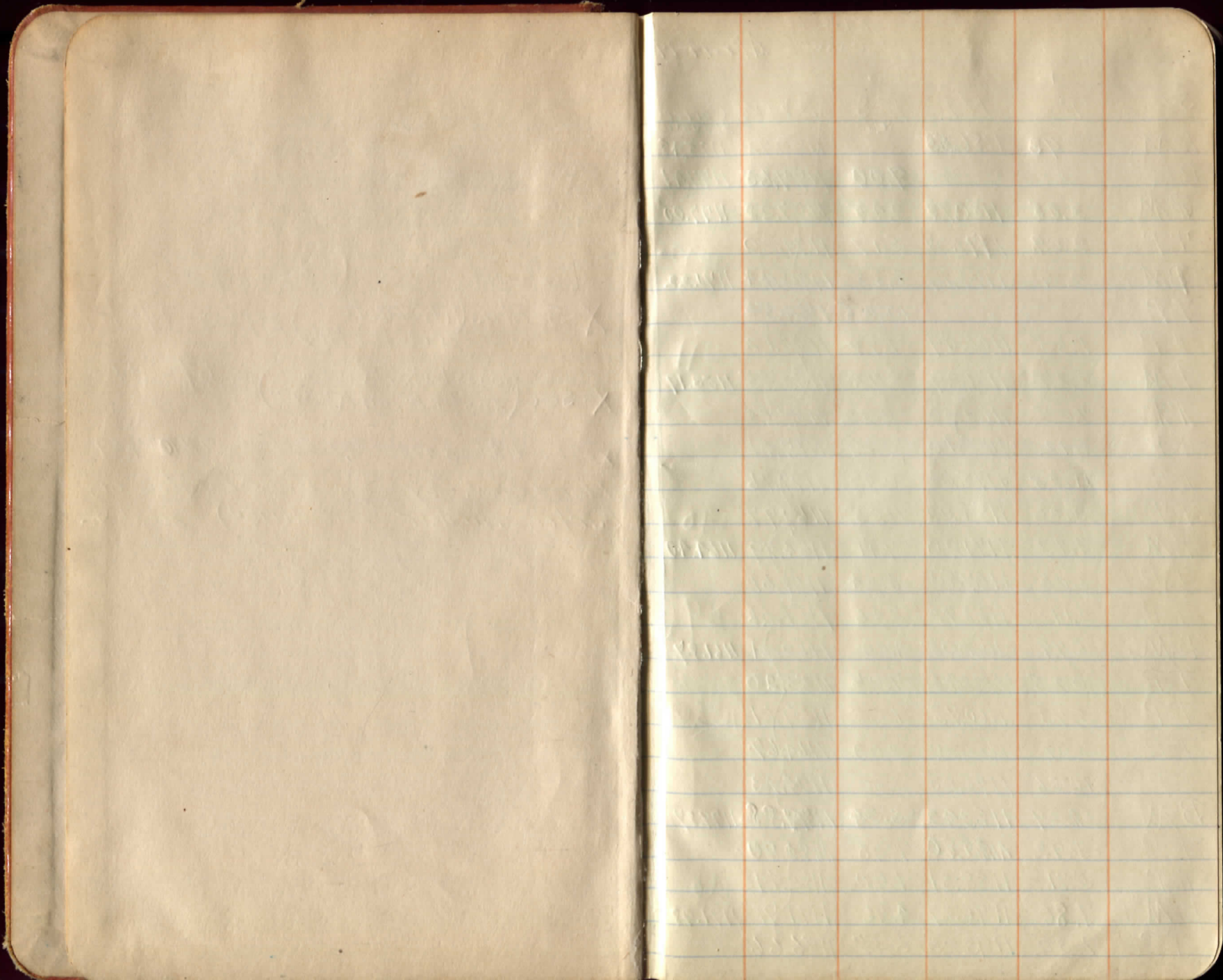
X-Sections (Rt. 322 to
2000 ft north) pg 63 11/20/47

X-SEC (Bass Lake Rd to
800 ft. E. on Rt 322) pg 67 "

X-SEC # Alignment S. END CULVERTS TH. TO PG 69

Plan & elev. Cuyahoga River Bridge on
Burton-Windsor Rd (1954) 80, 81, 82

(93)



ELWELL
GANN APR. 14-19

Sta.	+	NI	-	FS	EV. or Correct Elevation
BM.	0.93	1186.25			1185.72 1185.49
BM			9.00		1177.65 1177.41
BM	3.08	1180.73	3.45		1177.28 1177.00 #13
T.P.	2.09	1179.37	5.17		1174.20 #12
BM.	0.59	1174.79	4.35		1170.44 1170.22 T.P.
TP			10.25		1164.54
TP	1.55	1166.09	9.97		1156.12 #11
BM	0.27	1156.39	2.94		1153.45 1153.19
TP	7.05	1160.50	0.52		1159.98
T.P.	8.12	1168.10	0.69		1167.41
T.P.	11.25	1178.66	0.90		1177.76
TP	3.26	1181.02	11.05		1169.97 #10
BM	1.93	1171.90	7.11		1164.79 1164.40 T.P.
T.P.	3.06	1167.85	6.24		1161.61
TP	2.11	1163.72	2.46		1161.26 #9
B.M.	5.79	1167.05	4.84		1162.21 1161.87
TP	0.25	1162.46	7.26		1155.20
TP	5.73	1160.93	1.32		1159.61 #8 1153.44
TP	7.09	1166.70	2.03		1164.69
TP	10.56	1175.23	1.10		1174.13 #7
BM	9.29	1183.42	3.54		1179.88 1179.87
T.P.	3.92	1189.80	1.20		1182.60
T.P.	5.71	1188.31	1.90		1186.41 #6
BM	9.86	1196.27	4.36		1191.91 1191.98 T.P.
TP.	1.32	1193.23	6.57		1186.66

15
 BM - 26" Maple L. Handkerkotts
 N.E. Cor. W. Paraph. Stone Culvert. Below Handkerkotts
 W-Root 4th Maple - 18" in front - Walter Lewis
 E-Root 3rd Maple - 18" in front Warren Chamberlain
 W-Side 24" ELM S.E. of Concrete Culvert
 24" ELM E side road 700 ft from 3 corners.
 18" Maple, by gate in front House E of Road
 H. Edwards Property.
 S.W. Cor. N. abutment of bridge at Sta 100+33
 18" ELM E side road S.W. of Sugar house - 200'.
 20" ELM W Side Road Oph. Springer - Ros.

Sta	+	N-F	-	Elev.	Correct Elevations
				1186.66	
T.P.	1.70	1188.36	8.26	1180.10	
TP	6.45	1186.55	0.44	1186.11	#5
BM	1.75	1187.86	5.91	1181.95	1181.98
TP	3.91	1185.86	5.05	1180.79	
TP	1.00	1181.48	9.98	1171.80	
TP	1.22	1173.02	0.46	1172.26	#4 1174.56
T.P.	10.48	1172.74	0.94	1181.90	
T.P.	11.33	1172.23	5.69	1177.54	#3
B.M.	11.94	1199.48	4.49	1194.99	1199.99
TP			1.52	1197.96	
T.P.	10.00	1207.96	0.96	1207.00	
T.P.	10.81	1217.81	1.36	1216.45	
TP	11.40	1227.85	1.09	1226.76	
T.P.	12.06	1238.82	1.73	1237.09	
T.P.	12.10	1249.19	0.58	1248.61	
T.P.	8.94	1257.53	4.07	1253.49	#2
B.M.	4.93	1258.41	3.85	1254.56	1254.56
T.P.	—	—	3.88	1254.53	
T.P.	4.80	1259.33	1.00	1258.33	
BM	4.12	1262.45	2.44	1260.01	
BM	—	—	1.52	1260.93	1260.93

BM set July '54

see field bk #97 pg 11

1261.56

20" ELM - S.W. cor. Bass Lake Entrance.

Opp. Sta 48+00
S.E. cor. Center foundation Steps to house

4th Maple 22" - in front of W.W. Wilbur Res.

18" Maple - East Side Rd. in Wheat Field.

Pavement at $\frac{1}{2}$ Hub.

N.E. cor. Foundation of Schoolhouse.

Spk in S.E. root 12" maple $\pm 100'$ west
of Bass Lake Rd $\neq \pm 35'$ N of $\frac{1}{2}$ 322

5

6

Cross Section.
Apr. 19-19

Elwell
Grav

Sta.	+	H.I.	-	Elev.
BM.	3.60	1264.53		1260.93 ✓
BM#25			3.57	1260.96 ✓
Sta. 00			4.5	1260.0 ✓
1			5.0	1259.5 ✓
2			5.4	1259.1 ✓
T.P.			4.36	1260.17 ✓
TP	2.64	1262.81		
3			4.3	1259.5 ✓
4			4.5	1258.3 ✓
5			4.8	1258.0 ✓
6			5.1	1257.7 ✓
T.P.	0.30	1258.79	4.32	1258.49 ✓
7			1.6	1257.2 ✓

N.E. Cor. foundation of School house.
S.W. " " " " "

+0.2	-0.1	0.0	-0.1	-0.2	
<u>4.3</u>	<u>4.6</u>	<u>4.5</u>	<u>4.6</u>	<u>4.7</u>	✓
5.0	2.5	0.0	2.5	3.0	
0.0	-0.3	-1.0	-0.3	0.0	
<u>5.0</u>	<u>5.3</u>	<u>6.0</u>	<u>5.3</u>	<u>5.0</u>	✓
2.5.0	14.0	13.0	8.0	0.0	
6.0	8.0	10.0	2.5		
+0.1	0.0	-1.1	-0.3	-0.8	-0.1
<u>5.3</u>	<u>5.4</u>	<u>6.5</u>	<u>5.7</u>	<u>5.9</u>	<u>5.1</u>
25.0	14.0	12.0	9.0	2.0	8.0
9.0	25.0				
+0.4	0.0	-1.1	+0.1	-0.4	+0.2
<u>3.9</u>	<u>4.3</u>	<u>5.4</u>	<u>4.2</u>	<u>4.3</u>	<u>5.0</u>
25.0	14.0	13.0	7.0	0.0	7.0
8.0	25.0				
-0.6	-0.3	-0.9	-0.7	-0.9	-0.3
<u>5.1</u>	<u>4.8</u>	<u>5.4</u>	<u>4.5</u>	<u>5.2</u>	<u>5.4</u>
25.0	12.0	7.0	0.0	6.0	8.0
10.0	25.0				
-0.3	-0.3	-1.0	-0.8	-1.4	-0.8
<u>5.1</u>	<u>5.1</u>	<u>5.5</u>	<u>4.8</u>	<u>5.6</u>	<u>6.2</u>
25.0	13.0	11.0	0.0	5.0	7.0
8.0	25.0				
-0.5	-0.5	-1.3	-0.9	-0.7	-1.2
<u>5.6</u>	<u>5.6</u>	<u>6.9</u>	<u>6.1</u>	<u>5.1</u>	<u>5.8</u>
25.0	12.0	11.0	10.0	0.0	6.0
7.0	8.0	25.0			
-0.5	-0.5	-1.3	-1.2	-0.6	+0.3
<u>2.1</u>	<u>2.1</u>	<u>2.9</u>	<u>1.6</u>	<u>2.7</u>	<u>2.2</u>
25.0	11.0	10.0	0.0	8.0	9.0
25.0					

9
Sta + HI - Elev.
8 1258.79 2.4 1256.4 ✓

9 3.6 1255.2 ✓

10 4.1 1254.7 ✓

11 4.6 1254.2 ✓

T.P. 3.89 1258.91 4.27 1254.52 ✓

11+67 culvert.
12" Pipe.

12 4.1 1254.3 ✓

13 4.3 1254.1 ✓

14 4.3 1254.1 ✓

B.M. 3.85 1254.56 ✓

15 4.4 1254.0 ✓

10

+0.1	-0.5	-1.4	-0.9	✓	-0.6	-1.3	-0.6	0.0	
<u>2.2</u>	<u>2.9</u>	<u>3.8</u>	<u>3.3</u>	<u>2.4</u>	<u>3.0</u>	<u>3.7</u>	<u>3.0</u>	<u>2.4</u>	✓
25.0	13.0	12.0	10.0	0.0	6.0	7.0	3.0	25.0	

+0.4	-0.3	-1.2	-0.3		-1.0	-0.6	+0.4		✓
<u>3.2</u>	<u>3.9</u>	<u>4.8</u>	<u>3.9</u>	<u>3.6</u>	<u>4.6</u>	<u>4.8</u>	<u>3.2</u>		✓
25.0	13.0	12.0	7.0	0.0	4.0	9.0	25.0		

	-0.4	-0.4	-1.2		-1.2	-0.7	-0.2		✓
	<u>4.5</u>	<u>4.5</u>	<u>5.3</u>	<u>4.1</u>	<u>5.3</u>	<u>4.8</u>	<u>4.3</u>		✓
	25.0	13.0	12.0	0.0	8.0	10.0	25.0		

-0.5	-0.3	-1.3	-0.5		-0.5	-1.1	-0.6	-0.5	✓
<u>5.1</u>	<u>4.9</u>	<u>5.9</u>	<u>5.1</u>	<u>4.6</u>	<u>5.1</u>	<u>5.7</u>	<u>5.2</u>	<u>5.1</u>	✓
25.0	14.0	13.0	11.0	0.0	6.0	8.0	10.0	25.0	

6.1 6.1

-0.7	-0.7	-1.6	-0.9	-0.4	✓	-0.2	-1.4	-0.6	
<u>4.8</u>	<u>4.8</u>	<u>5.7</u>	<u>5.0</u>	<u>4.5</u>	<u>4.1</u>	<u>4.3</u>	<u>5.5</u>	<u>4.7</u>	✓
25.0	15.0	14.0	12.0	8.0	0.0	8.0	11.0	25.0	

	-0.3	-0.3	-1.3	+0.3		-0.6	-1.2	-0.4	-0.1	✓
	<u>4.6</u>	<u>4.6</u>	<u>5.6</u>	<u>4.0</u>	<u>4.3</u>	<u>4.9</u>	<u>5.5</u>	<u>4.7</u>	<u>4.7</u>	✓
	25.0	14.0	13.0	3.0	0.0	6.0	7.0	8.0	25.0	

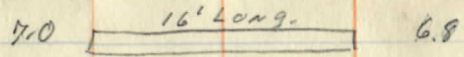
0.0	-0.1	-1.2	-0.2		-0.5	-1.2	-0.2	+0.1	
<u>4.2</u>	<u>4.1</u>	<u>5.5</u>	<u>4.5</u>	<u>4.3</u>	<u>4.8</u>	<u>5.5</u>	<u>4.5</u>	<u>4.2</u>	✓
25.0	16.0	15.0	9.0	0.0	5.0	7.0	9.0	25.0	

S.W. Side 18" Maple East of Rd. at Sta. 14+12

+0.2	-0.5	-1.6	+0.2		-1.1	-0.2	+0.1		✓
<u>4.0</u>	<u>4.7</u>	<u>5.8</u>	<u>4.2</u>	<u>4.4</u>	<u>5.5</u>	<u>4.6</u>	<u>4.3</u>		✓
25.0	15.0	14.0	4.0	0.0	7.0	10.0	25.0		

Sta	+	H.I	-	Elev.
16		1258.91	4.5	1253.9 ✓
T.P.	4.63	1258.55	4.49	1253.92 ✓
17			5.8	1252.8 ✓
18			5.3	1253.3 ✓
18+40				
19			5.0	1253.6 ✓
20			4.5	1254.1 ✓
21			6.7	1251.9 ✓
T.P.	1.37	1252.12	7.80	1250.75 ✓
22			3.1	1249.1 1249.0
23			6.1	1246.0 ✓
24			10.0	1242.1 ✓

Culvert
12" Pipe



	0.0	-0.5	-1.4	-0.3	4.5	-0.5	-1.1	-0.3	-0.2
	4.5	5.0	5.4	4.8	4.5	5.0	5.6	4.8	4.7
	25.0	14.0	13.0	8.0	0.0	6.0	7.0	9.0	25.0
	+1.0	+0.3	-0.4	+0.6	-0.1	+0.6	+0.5		
	4.8	5.5	6.2	5.2	5.8	5.9	5.2	5.3	
	25.0	13.0	12.0	8.0	0.0	7.0	8.0	25.0	
	-0.3	-0.4	-1.2	-0.8	-0.5	-1.1	-0.5	-0.7	
	5.6	5.7	6.5	6.1	5.3	5.8	6.4	5.8	6.0
	25.0	13.0	12.0	10.0	0.0	7.0	10.0	11.0	25.0
	+0.4	-0.5	-1.2	-0.8	-0.8	-1.3	-0.6	-0.8	
	4.6	5.5	6.2	5.0	5.8	6.3	5.6	5.8	
	25.0	12.0	11.0	0.0	8.0	9.0	10.0	25.0	
	+0.7	+0.1	-1.3	-1.1	-1.1	-0.5	-0.7		
	3.8	4.4	5.8	4.5	5.6	5.0	5.2		
	25.0	13.0	10.0	0.0	10.0	11.0	25.0		
	+1.2	+0.7	-0.5	-1.2	-0.8	-1.2	+0.1	+0.3	
	5.5	6.0	7.2	7.8	6.7	4.5	7.9	6.6	6.4
	25.0	16.0	11.0	10.0	0.0	7.0	9.0	12.0	25.0
	+1.8	+1.2	-1.2	-1.0	+0.2	+0.9			
	7.3	7.9	7.3	3.1	4.1	3.9	2.2		
	25.0	15.0	10.0	0.0	9.0	11.0	25.0		
	+2.3	-1.8	-1.1	-0.4	-1.1	+1.7	+1.4		
	3.8	4.2	7.2	6.5	6.1	7.2	4.4	4.7	
	25.0	15.0	10.0	5.0	0.0	11.0	15.0	25.0	
	+2.1	+1.6	-1.5	-1.0	-1.1	-1.8	+2.0	+2.1	
	7.9	9.4	11.5	11.0	10.0	11.1	11.5	8.0	7.9
	25.0	18.0	12.0	10.0	0.0	9.0	10.0	16.0	25.0

Plot

Sta. + H.I. - Elev.

T.P. 2.20 1241.93 12.39 1239.73 ✓

25 5.4 1236.5 ✓

26 10.2 1231.7 ✓

T.P. 1.58 1232.57 10.94 1230.99 ✓

27 4.6 1228.0 1228.1

28 8.7 1223.9 ✓

28+25 10.6 1222.0 Rd. Inters. ✓

T.P. 0.54 1222.39 10.75 1221.82 ✓

29 3.3 1219.1 ✓

30 7.2 1214.2 ✓

31 12.4 1210.0 ✓

+3.7+3.2-0.6-1.5-0.9 0.0 -0.7+2.2+2.5
~~1.7~~ ~~2.2~~ ~~6.6~~ ~~6.9~~ ~~6.8~~ 5.4 5.4 ~~6.1~~ ~~3.2~~ ~~2.9~~ ✓
 25.0 20.0 15.0 13.0 11.0 0.0 8.0 10.0 15.0 25.0

+2.0 +1.5-1.4-0.9 -1.1 +1.1 -0.7
~~8.2~~ ~~8.7~~ ~~11.6~~ ~~11.1~~ 10.2 11.3 9.1 10.9 ✓
 25.0 17.0 11.0 10.0 0.0 9.0 15.0 25.0

+3.2 +2.8 -1.4 -0.7 -1.1 +2.0 +2.4
~~1.4~~ ~~1.8~~ ~~6.0~~ 4.6 5.3 ~~5.7~~ ~~2.6~~ ~~2.2~~ ✓
 25.0 15.0 10.0 0.0 9.0 11.0 16.0 25.0

+0.4 +0.4 -0.1 +0.1 -1.1 +1.0 +0.7
~~9.3~~ ~~8.3~~ ~~9.8~~ 8.7 8.6 9.8 4.7 9.0 ✓
 36.0 25.0 12.0 0.0 8.0 11.0 16.0 25.0

+4.2 +1.4 +0.1 +1.1
~~6.4~~ ~~7.2~~ ~~10.5~~ 10.6 9.5 ✓
 100.0 35.0 25.0 0.0 25.0

+2.2 +0.1 -0.6 -1.6 -0.9 -0.9 -1.4 -0.5 +1.3 +2.0
~~1.1~~ ~~3.2~~ ~~3.9~~ ~~4.2~~ ~~4.2~~ 3.3 4.2 4.7 3.8 2.0 1.3 ✓
 25.0 22.0 19.0 17.0 15.0 0.0 5.0 6.0 9.0 14.0 25.0

+3.3 +3.6 -0.8 -0.4 -0.8 -1.7 -0.9 -0.9 +2.0 +1.8
~~3.9~~ ~~3.6~~ ~~8.4~~ ~~7.6~~ 7.2 8.0 8.9 8.1 8.1 5.2 5.4 ✓
 25.0 23.0 17.0 15.0 0.0 7.0 8.0 9.0 11.0 14.0 25.0

+4.8 +4.2 +3.6 -1.4 -0.2 -0.6 +2.7 +3.0
~~7.6~~ ~~8.2~~ ~~8.8~~ ~~13.8~~ 12.6 12.4 13.0 9.7 9.4 ✓
 35.0 25.0 20.0 12.0 7.0 0.0 9.0 16.0 25.0

Sta. + H.I. - Elev.
 T.P. 1222.39
 T.P. 1.50 1212.09 11.80 1210.59 ✓

32 7.2 1204.9 ✓

33 11.4 1200.7 ✓

T.P. 2.54 1202.79 11.84 1200.22 ✓

33+69.22 3.6 1199.2 ✓

34 4.5 1198.3 ✓

35 5.0 1197.8 ✓

36 8.6 1194.2 ✓

37 12.5 1190.3 ✓

B.M. 7.80 1194.99 ✓

T.P. 2.55 1193.83 11.51 1191.28 ✓

38 6.6 1187.2 ✓

+3.9 +3.5-0.6+0.1 -1.5+3.2 +3.9 +3.9
~~3.3~~ ~~3.7~~ ~~4.8~~ ~~7.1~~ ~~7.2~~ ~~8.7~~ ~~9.0~~ ~~9.3~~ ~~3.3~~ ✓
 25.0 20.0 14.0 11.0 0.0 10.0 18.0 22.0 25.0
 +1.9 +1.2-1.0 -1.1 +2.2 +2.8
~~9.5~~ ~~10.2~~ ~~12.4~~ ~~11.4~~ ~~12.5~~ ~~9.2~~ ~~8.6~~ ✓
 25.0 16.0 8.0 0.0 14.0 19.0 25.0

+2.1 -0.1 -1.0 +0.5 -0.5 +0.2 +0.2
~~1.0~~ ~~3.7~~ ~~4.6~~ ~~3.6~~ ~~3.1~~ ~~4.1~~ ~~3.4~~ ~~3.4~~ ✓
 25.0 8.0 6.0 0.0 7.0 17.0 18.0 25.0

+3.7 -0.1 -0.6 +0.9 -0.2 +0.5 +0.5
~~0.8~~ ~~4.6~~ ~~5.1~~ ~~4.5~~ ~~3.6~~ ~~4.7~~ ~~4.6~~ ~~4.0~~ ✓
 25.0 5.0 4.0 0.0 8.0 18.0 19.0 25.0

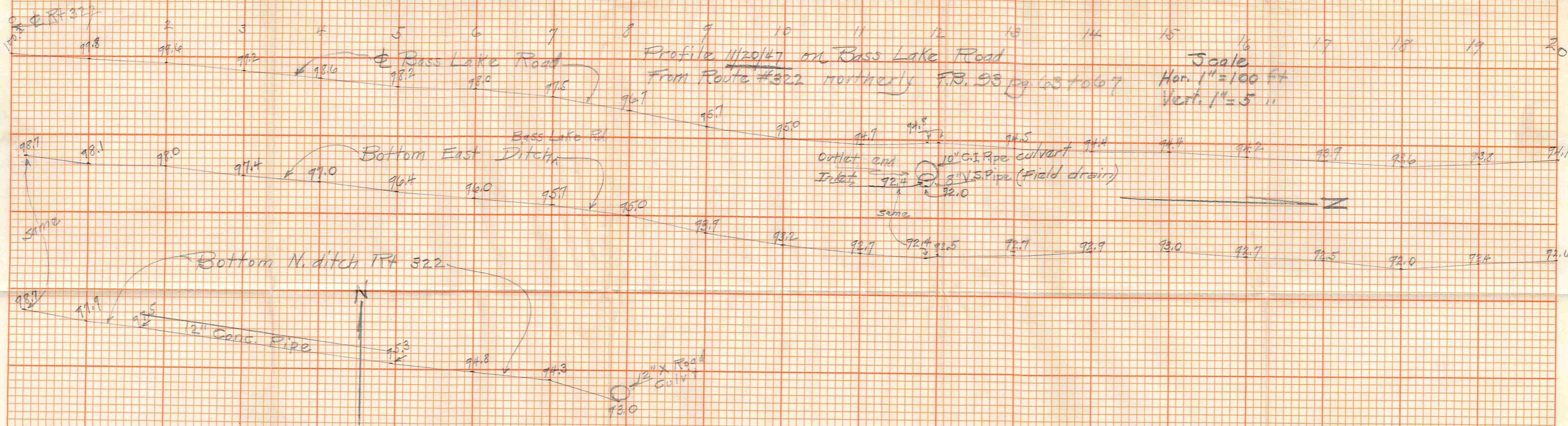
-1.0 -0.2 -1.4 -1.0 -0.8 -1.4 -0.4 +0.3
~~6.0~~ ~~5.2~~ ~~6.4~~ ~~6.0~~ ~~5.0~~ ~~5.8~~ ~~6.4~~ ~~5.4~~ ~~4.7~~ ✓
 25.0 12.0 9.0 7.0 0.0 11.0 12.0 15.0 25.0

+1.4 -0.1 0.6 +0.5 -1.0 +2.9 +4.1
~~7.2~~ ~~8.7~~ ~~9.2~~ ~~8.1~~ ~~8.6~~ ~~9.6~~ ~~5.7~~ ~~4.5~~ ✓
 25.0 20.0 19.0 12.0 0.0 3.0 9.0 25.0

+0.4 +0.5 -1.8 -0.2 -1.5 +4.1 +5.2
~~12.1~~ ~~12.0~~ ~~14.3~~ ~~12.7~~ ~~12.5~~ ~~14.0~~ ~~8.4~~ ~~4.3~~ ✓
 25.0 18.0 15.0 11.0 0.0 4.0 16.0 25.0

4th Maple - 22 - in front W.W.W. 11 bur. 37+37.0

-0.6 -0.7 -1.4 -0.9 +0.7 +2.2
~~4.2~~ ~~4.3~~ ~~8.0~~ ~~7.5~~ ~~6.6~~ ~~5.9~~ ~~4.4~~ ✓
 25.0 14.0 13.0 11.0 0.0 12.0 25.0



Sta + HT - Elev

1175.06

46. 6.0 1169.1 ✓

47. 3.8 1171.3 ✓

B.M. 8.40 1182.96 0.50 1174.56 ✓

48 9.0 1174.0 ✓

49 6.1 1176.9 ✓

50 3.6 1179.4 ✓

T.P. 4.55 1185.36 2.15 1180.81

51 4.7 1180.7 ✓

52 4.2 1191.2 ✓

53 3.5 1191.9 ✓

54 3.5 1191.9 ✓

T.P. 6.30 1197.06 4.60 1190.96 ✓

BM 5.05 1191.98 ✓

Σ

+0.9	+1.3	-0.6	-0.1		+0.7	+0.3	+2.4	+3.0
5.2	4.7	6.6	6.1	6.0	5.8	5.7	9.6	3.0
25.0	19.0	14.0	13.0	0.0	8.0	9.0	18.0	25.0

-0.2	-0.1	-0.9		+0.2	+1.4	+1.8
4.0	3.9	4.7	3.8	3.6	2.4	2.0
25.0	19.0	14.0	0.0	6.0	13.0	25.0

S.E. cor. center foundation opposite Sta 48. Sta 48. Sta 48. Sta 48. Sta 48. Sta 48. Sta 48. Sta 48.

+0.3	+0.4	-1.2		-0.1	-0.5	+2.9	+3.2
3.7	5.6	10.2	9.0	9.1	9.5	6.1	5.5
25.0	15.0	13.0	0.0	8.0	10.0	17.0	25.0

+0.7	+0.7	-1.2	-0.4		-0.5	-1.1	+2.0	+2.8
5.4	5.4	7.3	6.5	6.1	6.6	4.2	4.1	3.3
25.0	15.0	12.0	9.0	0.0	8.0	9.0	15.0	25.0

+0.4	-0.1	-1.2		-0.9	0.0	+1.7	+1.7
3.2	3.7	4.5	3.6	4.5	3.6	4.9	4.9
25.0	13.0	11.0	0.0	8.0	9.0	17.0	25.0

-0.9	-0.2	-0.9	-0.3	-1.2		-0.9	-0.2	+0.9	+1.3
5.6	4.8	5.6	5.0	5.7	4.7	5.6	4.9	3.5	3.4
25.0	22.0	19.0	11.0	10.0	0.0	12.0	13.0	15.0	25.0

-0.7	0.0	-0.7	-0.8	-1.4		-1.0	+1.3	+1.2
4.9	4.2	4.9	5.0	5.6	4.2	5.2	2.9	2.5
25.0	22.0	19.0	12.0	11.0	0.0	11.0	19.0	25.0

-1.0	-0.4	-1.2	-0.8	-1.5		-0.4	-1.3	-0.2	+0.9	+1.3
4.5	3.7	4.7	4.3	5.0	3.5	3.9	4.8	3.7	2.6	2.2
25.0	22.0	20.0	12.0	11.0	0.0	6.0	11.0	13.0	20.0	25.0

-0.6	-0.4	-1.9	-0.3		-0.9	+1.1	+1.9	+1.9
4.1	3.7	5.4	3.8	3.5	4.4	3.4	4.6	4.4
25.0	20.0	16.0	9.0	0.0	9.0	13.0	20.0	25.0

20 E.L.M. S.W. Cor. Boggs Lake Entrance

Sta. + H-I - Elev.

1187.06

54+60.00

5.2

1181.9

Bass Lake Entrance

55.

4.8

1182.3

56

3.9

1183.2

T.P.

5.63

1191.06

1.63

1185.43

57

5.8

1185.3

58

4.9

1186.2

59

7.6

1183.5

T.P.

6.27

1185.18

12.15

1178.91

60

5.0

1180.2

61

7.3

1177.9

61+10.00

stone culvert

-5.1	-0.4	-0.5	+0.4	-0.6	+0.5	+1.7	+1.9
<u>4.8</u>	<u>5.6</u>	<u>5.7</u>	<u>4.8</u>	<u>5.2</u>	<u>5.8</u>	<u>4.7</u>	<u>3.8</u>
10.0	25.0	13.0	12.0	0.0	10.0	12.0	18.0

-0.7	-0.4	-0.9	-0.4	-1.1	-0.2	-0.2	-0.2
<u>5.5</u>	<u>5.2</u>	<u>5.7</u>	<u>4.8</u>	<u>5.2</u>	<u>5.7</u>	<u>5.0</u>	<u>5.5</u>
25.0	14.0	12.0	0.0	7.0	10.0	11.0	20.0

-1.1	-0.3	-0.8	-0.2	-1.1	-0.4	-1.1	+0.6	+1.7
<u>5.0</u>	<u>4.2</u>	<u>4.7</u>	<u>4.4</u>	<u>5.0</u>	<u>3.9</u>	<u>4.3</u>	<u>5.0</u>	<u>3.2</u>
25.0	18.0	16.0	12.0	9.0	0.0	10.0	13.0	19.0

+1.2	+0.2	-0.2	+0.2	-0.7	0.0	-1.2	+2.3	
<u>4.6</u>	<u>5.6</u>	<u>6.4</u>	<u>5.6</u>	<u>6.5</u>	<u>5.8</u>	<u>5.8</u>	<u>7.0</u>	<u>3.5</u>
25.0	17.0	14.0	9.0	8.0	0.0	8.0	13.0	25.0

-1.7	-0.9	-1.5	-0.7	-1.2	-0.2	-1.1	+0.5	+2.4
<u>6.6</u>	<u>5.8</u>	<u>6.1</u>	<u>5.6</u>	<u>6.1</u>	<u>4.9</u>	<u>5.1</u>	<u>6.0</u>	<u>4.4</u>
25.0	19.0	16.0	11.0	10.0	0.0	7.0	12.0	14.0

+0.4	-0.2	-0.3	-1.9	-0.4	-1.2	+1.1	+3.3	
<u>7.2</u>	<u>7.8</u>	<u>4.9</u>	<u>7.5</u>	<u>7.6</u>	<u>8.0</u>	<u>8.8</u>	<u>6.5</u>	<u>4.3</u>
25.0	19.0	10.0	9.0	0.0	6.0	9.0	13.0	25.0

+1.0	+1.7	+1.0	+1.3	-0.8	-0.4	-1.0	+0.3	+3.6	
<u>4.0</u>	<u>3.3</u>	<u>4.8</u>	<u>3.4</u>	<u>5.8</u>	<u>5.0</u>	<u>5.4</u>	<u>6.0</u>	<u>4.7</u>	<u>4.4</u>
25.0	22.0	19.0	12.0	9.0	0.0	7.0	10.0	11.0	25.0

-1.7	-0.8	-1.4	-0.1	-0.2	-0.7	-0.4	-1.2	
<u>8.0</u>	<u>8.1</u>	<u>8.7</u>	<u>7.4</u>	<u>7.3</u>	<u>7.5</u>	<u>8.0</u>	<u>4.4</u>	<u>8.5</u>
25.0	10.0	9.0	5.0	0.0	10.0	14.0	15.0	25.0

10.8 [Width 2.0' Depth 2.0'] 20' Length 10.6

Sta.	+	HI	-	Elev.
		1185.18		
62			7.2	1178.0 ✓
63			5.3	1179.9 ✓
64			4.1	1181.1 ✓
T.P.	8.48	1192.54	1.12	1184.06 ✓
65			8.3	1184.2 ✓
66			6.5	1186.0 ✓
67			5.9	1186.6 ✓
68			5.3	1187.2 ✓
68+55.00				
69			4.5	1188.0 ✓
B.M.	4.00	1195.98	0.56	1191.98 ✓
70			6.6	1189.4 ✓

Stone
Culvert

+0.9	+0.2	-0.9	-0.8	-0.1	+1.9	+1.9
<u>6.3</u>	<u>4.6</u>	<u>8.1</u>	<u>7.2</u>	<u>8.0</u>	<u>7.3</u>	<u>5.3</u>
25.0	12.0	10.0	0.0	14.0	15.0	21.0
+0.2	+0.4	-1.1	-1.1	-1.8	+0.5	+2.0
<u>5.1</u>	<u>4.9</u>	<u>6.4</u>	<u>5.3</u>	<u>6.1</u>	<u>7.1</u>	<u>4.8</u>
25.0	13.0	11.0	0.0	9.0	12.0	15.0
-0.9	0.0	-0.9	-0.7	+0.7	+2.3	+2.7
<u>5.0</u>	<u>4.1</u>	<u>5.0</u>	<u>4.1</u>	<u>4.8</u>	<u>3.4</u>	<u>1.8</u>
25.0	13.0	11.0	0.0	11.0	13.0	19.0

-0.1	+0.4	-0.9	+0.2	+0.6		
<u>8.4</u>	<u>4.9</u>	<u>4.2</u>	<u>8.3</u>	<u>8.1</u>	<u>4.7</u>	
25.0	15.0	14.0	0.0	13.0	25.0	
-0.7	-0.2	-0.9	-0.2	-1.3	-0.3	+0.9
<u>4.2</u>	<u>6.7</u>	<u>8.1</u>	<u>6.5</u>	<u>6.7</u>	<u>4.8</u>	<u>6.5</u>
25.0	15.0	13.0	0.0	4.0	9.0	10.0
-0.1	+0.4	-0.8	-0.3	-0.4	+2.1	+2.3
<u>6.4</u>	<u>5.5</u>	<u>6.7</u>	<u>5.9</u>	<u>6.2</u>	<u>6.5</u>	<u>3.8</u>
25.0	15.0	13.0	0.0	5.0	9.0	14.0
-0.4	0.0	-0.7	-0.3	+0.8	+1.3	
<u>6.8</u>	<u>5.3</u>	<u>6.0</u>	<u>5.3</u>	<u>5.6</u>	<u>4.5</u>	<u>4.0</u>
25.0	12.0	11.0	0.0	9.0	12.0	25.0

7.9 Width - 2.0' Depth 2.0'
 20.0' Length 7.6

-1.0	-0.2	-0.6	-0.6	+0.2	+1.6
<u>5.5</u>	<u>4.7</u>	<u>5.1</u>	<u>4.5</u>	<u>5.1</u>	<u>4.3</u>
25.0	12.0	11.0	0.0	8.0	9.0

B.M. 20" EL in West Side Rd. Op. h. Springer res.

-0.2	+0.1	-0.7	-1.0	+1.0	+2.6
<u>6.8</u>	<u>6.5</u>	<u>7.3</u>	<u>6.6</u>	<u>7.6</u>	<u>5.6</u>
25.0	12.0	11.0	0.0	7.0	12.0

Sta. + H.I. - Elev.

71 1195.98 4.6 1191.4 ✓

72 1191.7 ✓

73 1186.4 ✓

T.P. 3.30 1186.84 12.44 1183.54 ✓

73+70.00 1181.9 ✓

74 1181.1 ✓

74+28.00 1178.0 1178.1 Stop Colocet

75 1179.6 ✓

76 1181.6 ✓

77 1183.9 ✓

78 1182.8 ✓

T.P. 1.39 1183.98 4.25 1182.59 ✓

⊕

+0.4 +0.1 -0.4 -0.8 +0.6 +2.2 +3.0
4.2 4.5 5.0 4.6 5.4 4.0 2.4 1.6 ✓
25.0 13.0 11.0 0.0 5.0 6.0 12.0 25.0

+1.3 +1.3 -0.7 +0.8 +1.5 +2.2
3.0 3.0 5.0 4.3 3.5 2.8 2.1 ✓
25.0 16.0 13.0 0.0 10.0 14.0 25.0

+4.2 +3.1 -0.3 +0.1 -0.7 +5.4 +5.3
5.4 6.5 9.9 9.6 9.5 8.3 4.2 4.3 ✓
25.0 14.0 9.0 0.0 8.0 12.0 25.0 35.0

+0.6 -0.6 -0.6 -0.9 +0.2 -0.9 -0.6 -1.6
4.3 5.5 5.5 5.5 4.9 4.7 5.8 5.5 6.5 ✓
25.0 16.0 6.0 5.0 0.0 9.0 17.0 19.0 25.0

-2.0 -1.8 -0.7 +0.3 -0.5 -1.3 -0.9 -0.9
4.7 4.5 6.4 5.7 5.4 6.2 7.0 6.6 6.6 ✓
25.0 12.0 4.0 0.0 12.0 19.0 20.0 21.0 25.0

8.8 Width - 18" Depth 18" Length - 21.0' 8.7

-3.0 -2.4 -3.2 -2.0 -0.8 +0.4 -0.2 +0.6 +1.4
10.2 9.6 10.4 9.2 8.0 7.2 6.8 7.4 6.6 5.8 ✓
25.0 14.0 12.0 11.0 7.0 0.0 12.0 17.0 18.0 25.0

+0.2 +1.0 -0.8 -0.2 -0.8 -0.2 +2.2 +2.4
5.0 4.2 6.0 5.2 5.4 6.0 5.4 3.0 2.8 ✓
25.0 13.0 9.0 0.0 8.0 12.0 13.0 20.0 25.0

-0.9 -0.9 0.0 +1.0
3.8 3.8 2.9 2.9 1.9 ✓
25.0 13.0 0.0 13.0 25.0

-1.2 -0.8 -1.2 -0.3 -0.2 -1.0 +0.7 +1.4
5.0 4.8 5.2 4.7 4.0 4.2 5.0 3.8 2.6 ✓
25.0 13.0 12.0 7.0 0.0 7.0 11.0 15.0 25.0

⊕

Sta	+	HI	-	Elev.
		1183.98		
79			3.0	1181.0 ✓
80			5.0	1179.0 ✓
BM			4.11	1179.89 ✓
81			7.1	1176.9 ✓
82			9.7	1174.3 ✓
T.P.	0.44	1174.02	10.40	1173.58 ✓
83			1.5	1172.5 ✓
84			3.7	1170.3 ✓
85			6.2	1167.8 ✓
86			8.4	1165.6 ✓
T.P.	1.47	1166.41	9.08	1164.94 ✓
87			2.7	1163.7 ✓

♀

	+0.1	+0.3	-1.0		-0.1	-0.9	+1.1	+1.9	
	<u>2.9</u>	<u>2.7</u>	<u>4.0</u>	<u>3.0</u>	<u>3.1</u>	<u>3.9</u>	<u>1.9</u>	<u>1.1</u>	✓
	25.0	14.0	7.0	0.0	7.0	10.0	13.0	25.0	
	+1.1	+1.1	-0.9		-0.4	-1.1	+1.7	+1.7	✓
	<u>3.9</u>	<u>3.9</u>	<u>5.9</u>	<u>5.0</u>	<u>5.4</u>	<u>6.1</u>	<u>3.3</u>	<u>3.3</u>	✓
	25.0	14.0	8.0	0.0	8.0	10.0	17.0	25.0	
18" Elm East Side Rd S.W. of Sugar H. Sta. 80+91.00									
	+0.8	+1.1	-1.1	-0.7		-0.4	-1.3	+1.5	+2.1
	<u>6.3</u>	<u>6.0</u>	<u>8.2</u>	<u>4.8</u>	<u>7.1</u>	<u>4.5</u>	<u>8.4</u>	<u>5.6</u>	<u>5.0</u>
	25.0	13.0	8.0	7.0	0.0	7.0	10.0	16.0	25.0
	+1.7	+1.0	-0.8		-0.3	-0.8	+1.4	+1.7	✓
	<u>8.0</u>	<u>8.7</u>	<u>10.5</u>	<u>9.7</u>	<u>10.0</u>	<u>10.5</u>	<u>8.3</u>	<u>8.0</u>	✓
	25.0	13.0	9.0	0.0	8.0	11.00	19.0	25.0	
	-1.2	-0.9	-0.2	-0.8		-0.1	-1.2	-0.5	0.0
	<u>2.7</u>	<u>2.4</u>	<u>1.7</u>	<u>2.3</u>	<u>1.5</u>	<u>1.6</u>	<u>2.7</u>	<u>2.0</u>	<u>1.5</u>
	25.0	20.0	10.0	9.0	0.0	7.0	13.0	14.0	25.0
	-0.3	-0.2	-0.1	-1.1	-0.6	-0.4	-1.0	-0.5	+0.9
	<u>4.0</u>	<u>3.9</u>	<u>3.8</u>	<u>4.8</u>	<u>4.3</u>	<u>3.7</u>	<u>4.1</u>	<u>4.7</u>	<u>4.2</u>
	25.0	20.0	12.0	11.0	8.0	0.0	7.0	11.0	12.0
	+0.6	+0.6	0.0	-0.8		-0.4	-0.9	0.0	+2.6
	<u>5.6</u>	<u>5.6</u>	<u>6.2</u>	<u>4.0</u>	<u>6.2</u>	<u>6.6</u>	<u>4.1</u>	<u>6.2</u>	<u>3.6</u>
	25.0	21.0	13.0	11.0	0.0	7.0	11.0	14.0	20.0
	+0.9	+0.9	+0.6	-1.1	-0.1	-0.1	-1.2	+3.1	+3.2
	<u>7.5</u>	<u>7.5</u>	<u>8.8</u>	<u>8.5</u>	<u>8.5</u>	<u>8.4</u>	<u>8.5</u>	<u>4.6</u>	<u>5.3</u>
	25.0	20.0	14.0	11.0	6.0	0.0	6.0	11.0	20.0
	+0.5	+0.5	-0.9	-0.3		-0.5	-1.2	+2.1	+2.2
	<u>2.2</u>	<u>2.2</u>	<u>3.6</u>	<u>2.0</u>	<u>3.7</u>	<u>3.2</u>	<u>3.9</u>	<u>0.6</u>	<u>0.5</u>
	25.0	12.0	9.0	6.0	0.0	10.0	12.0	20.0	25.0

Sta.	T	HI	-	Elev.
		1166.91		
88		4.2		1162.2 ✓
89		5.4		1161.0 ✓
90		6.5		1159.9 ✓
T.P.	2.82	1161.59	7.64	1158.77

91		2.6		1159.0 ✓
92		3.4		1158.2 ✓
93		4.1		1157.5 ✓
94		5.1		1156.5 ✓
95		5.3		1156.3 ✓
T.P.	3.41	1157.81	7.19	1154.90 ✓

96 2.9 1154.9 ✓ + ✓

-0.5	-0.2	-0.5	-0.1	-0.3	-1.4	-0.4	+1.0	+1.0		
<u>4.7</u>	<u>4.4</u>	<u>4.7</u>	<u>5.1</u>	<u>4.2</u>	<u>4.5</u>	<u>5.6</u>	<u>4.6</u>	<u>3.2</u>	<u>3.2</u>	
25.0	19.0	16.0	9.0	0.0	8.0	13.0	14.0	20.0	25.0	
-0.4	-0.3	-0.5	-1.0	-0.3	-0.7	-1.5	-0.8	+0.5	+0.6	
<u>5.2</u>	<u>5.7</u>	<u>5.9</u>	<u>6.4</u>	<u>5.7</u>	<u>5.4</u>	<u>6.1</u>	<u>6.9</u>	<u>6.2</u>	<u>4.9</u>	<u>4.8</u>
25.0	19.0	11.0	10.0	5.0	0.0	11.0	13.0	14.0	20.0	25.0
-0.5	-0.5	-0.8	-1.3	-0.1	-0.2	-1.1	-0.5	+0.4	+0.5	
<u>4.0</u>	<u>4.0</u>	<u>4.3</u>	<u>4.8</u>	<u>6.6</u>	<u>6.5</u>	<u>6.7</u>	<u>7.6</u>	<u>4.0</u>	<u>6.1</u>	<u>8.0</u>
25.0	19.0	11.0	10.0	6.0	0.0	8.0	13.0	14.0	20.0	25.0

-0.7	-0.8	-0.9	-1.2	-0.4	-1.0	-0.3	0.0	+0.5	
<u>3.3</u>	<u>3.4</u>	<u>3.5</u>	<u>3.8</u>	<u>2.6</u>	<u>3.0</u>	<u>3.6</u>	<u>2.9</u>	<u>2.6</u>	<u>2.1</u>
25.0	20.0	12.0	11.0	0.0	9.0	13.0	14.0	18.0	25.0

-0.6	-0.6	-1.1	-0.2	-1.3	-0.5	0.0	-0.8	
<u>4.0</u>	<u>4.0</u>	<u>4.5</u>	<u>3.4</u>	<u>3.6</u>	<u>4.7</u>	<u>3.9</u>	<u>3.4</u>	<u>4.0</u>
25.0	20.0	11.0	0.0	8.0	12.0	13.0	17.0	25.0

-0.1	-0.1	-0.7	-1.3	-0.5	-0.6	-1.1	-0.4	+0.1	+0.1	
<u>4.2</u>	<u>4.2</u>	<u>4.8</u>	<u>5.4</u>	<u>4.6</u>	<u>4.1</u>	<u>4.7</u>	<u>5.2</u>	<u>4.5</u>	<u>4.0</u>	<u>4.0</u>
25.0	20.0	12.0	11.0	8.0	0.0	8.0	11.0	12.0	15.0	25.0

-0.2	-0.2	-0.4	-1.0	-0.1	-0.3	-0.8	+0.2	+0.5	
<u>5.3</u>	<u>5.3</u>	<u>5.5</u>	<u>6.1</u>	<u>5.2</u>	<u>5.1</u>	<u>5.4</u>	<u>5.9</u>	<u>4.9</u>	<u>4.6</u>
25.0	20.0	12.0	11.0	7.0	0.0	8.0	11.0	17.0	25.0

-0.3	-0.3	-0.9	-1.4	-0.5	-0.4	-1.4	-0.4	-0.5	
<u>5.6</u>	<u>5.6</u>	<u>6.2</u>	<u>6.7</u>	<u>5.8</u>	<u>5.3</u>	<u>5.7</u>	<u>6.7</u>	<u>5.7</u>	<u>5.8</u>
25.0	20.0	14.0	13.0	8.0	0.0	6.0	12.0	16.0	25.0

+0.5	0.0	-0.8	-1.6	-0.6	-0.1	-1.6	-0.8	-0.2	+0.8	
<u>2.4</u>	<u>2.4</u>	<u>3.7</u>	<u>4.5</u>	<u>3.5</u>	<u>2.9</u>	<u>3.0</u>	<u>4.5</u>	<u>3.7</u>	<u>3.1</u>	<u>2.1</u>
25.0	20.0	13.0	11.0	7.0	0.0	6.0	14.0	15.0	18.0	25.0

Sta.	+	H.I.	-	Elev.
		1163.79		
104			2.6	1161.2 ✓
105			2.3	1161.5 ✓
T.P.	2.31	1165.10	0.98	1162.79 ✓
106			3.0	1162.1 ✓
107			3.1	1162.0 ✓
108			3.6	1161.5 ✓
109			4.2	1160.9 ✓
110			4.4	1160.7 ✓
111			4.2	1160.9 ✓
TP	1.69	1163.00	3.79	1161.31 ✓

112 2.4 1160.6 ✓

Σ												
-0.3	-0.5	-1.0	-0.4						-0.5	-1.2	-0.4	+0.5
2.7	3.1	3.6	3.0	2.6					3.1	3.8	3.0	2.1
25.0	13.0	11.0	8.0	0.0					10.0	14.0	16.0	25.0
-0.1	-0.1	-1.0	-0.4						-0.3	-1.1	-0.5	+0.4
2.4	2.4	3.3	2.7	2.3					2.6	3.4	2.8	1.9
25.0	14.0	11.0	9.0	0.0					9.0	12.0	13.0	25.0
-0.1	0.0	-0.7							-0.4	+0.6	+0.8	
3.1	3.0	3.7	3.0						3.1	2.9	2.2	
25.0	18.0	13.0	0.0						12.0	19.0	25.0	
+0.5	0.0	-0.8							-0.2	-0.9	-0.2	+0.7
2.6	3.1	3.0	3.1						3.3	4.0	3.8	2.1
25.0	14.0	12.0	0.0						10.0	12.0	13.0	25.0
-0.5	-0.1	-0.7	-1.3						-0.4	-0.7	+0.3	
4.1	3.7	4.3	4.8	3.6					4.0	4.8	3.3	
25.0	22.0	11.0	10.0	0.0					10.0	15.0	25.0	
-0.9	-0.7	-1.0							-0.1	-0.9	-0.8	-0.3
5.1	4.9	5.2	4.2						4.3	5.1	5.0	4.5
25.0	9.0	9.0	0.0						9.0	14.0	19.0	25.0
-0.4	-0.1	-1.0	-0.2						-0.1	-0.6	-0.2	+0.4
4.8	4.5	5.4	4.6	4.4					4.5	5.0	4.6	4.0
25.0	14.0	11.0	5.0	0.0					11.0	14.0	15.0	25.0
-0.4	-0.7	-1.4							-0.3	-0.9	-0.4	-0.4
4.6	4.9	5.6	4.2						4.5	5.1	4.6	4.6
25.0	12.0	10.0	0.0						12.0	14.0	15.0	25.0
+0.4	+0.4	-0.8							-0.5	-1.3	-0.4	+1.2
2.3	2.0	3.2	2.4						2.9	3.7	2.8	1.2
25.0	14.0	7.0	0.0						12.0	15.0	16.0	25.0

Sta + HI - Elev.

1163.00

113 3.7 1159.3 ✓

114 4.1 1158.9 ✓

114+70 Iron Pipe

115 4.4 1158.6 ✓

116 3.6 1159.4 ✓

117 1.9 1161.1 ✓

T.P. 6.72 1168.28 1.44 1161.56 ✓

118 6.4 1161.9 ✓

119 5.5 1162.9 ✓

120 5.0 1163.9 ✓

121 4.8 1163.5 ✓

Σ

+0.4 0.0 0.0 -0.8 -0.3 -1.2 -0.3 -0.3 +1.1
2.7 2.7 2.4 4.5 3.7 4.0 4.9 4.0 4.0 2.7 ✓
25.0 20.0 12.0 10.0 0.0 11.0 7.0 15.0 20.0 25.0

-1.0 -1.0 -1.7 -0.2 -0.2 -1.6 -1.2 -1.3
5.1 5.1 5.8 4.3 4.1 4.3 5.7 5.3 5.4 ✓
25.0 9.0 8.0 6.0 0.0 9.0 13.0 14.0 25.0

Diameter 1.0'

5.9 Length - 18.0' 7.0

-0.2 -0.2 -0.5 -0.9 -0.1 -1.0 -0.4 -0.8 0.0
4.6 4.6 4.9 5.3 4.4 4.5 5.4 4.8 5.2 4.4 ✓
25.0 18.0 16.0 12.0 0.0 9.0 13.0 7.0 20.0 25.0

-0.1 -0.2 -0.3 -0.9 -1.2 -0.1 -0.9 -0.2 +1.0
3.7 3.8 3.9 4.5 4.8 3.6 3.7 4.5 3.8 2.6 ✓
25.0 18.0 13.0 10.0 6.0 0.0 10.0 14.0 16.0 25.0

+0.9 -0.1 -1.2 -0.2 -0.6 -0.1 +0.4
1.8 2.0 3.1 1.9 2.1 2.5 2.0 1.5 ✓
25.0 19.0 8.0 0.0 11.0 15.0 16.0 25.0

-1.2 -0.3 -1.2 -0.4 -0.2 -0.9 -0.4 -0.2
7.6 6.8 7.6 6.8 6.4 6.6 7.3 6.8 6.6 ✓
25.0 18.0 11.0 9.0 0.0 11.0 14.0 15.0 25.0

+0.7 -0.3 -1.4 -0.5 -0.4 -1.4 -0.8 -0.6
4.8 5.3 6.9 6.0 5.5 5.9 6.9 6.3 6.1 ✓
25.0 18.0 10.0 6.0 0.0 8.0 12.0 13.0 25.0

+0.2 +0.3 -1.1 -0.8 -0.4 -1.1 -1.6
4.8 4.8 6.1 5.8 5.0 5.4 6.1 6.6 ✓
25.0 23.0 11.0 7.0 0.0 8.0 12.0 25.0

-0.5 -0.4 -0.9 -0.4 -0.4 -1.0 -0.4 -0.6 +0.4 +0.1
5.2 5.2 5.7 5.2 4.8 5.2 5.8 5.2 5.4 4.4 4.7 ✓
25.0 18.0 11.0 7.0 0.0 10.0 12.0 13.0 19.0 21.0 25.0

Σ

32

Sta	+	HI	-	Elev.
		1168.25		
122			4.2	1164.1 ✓
123			3.5	1164.8 ✓
BM	9.54	1173.94	3.85	1164.40 ✓
124			8.0	1165.9 ✓
125			5.8	1168.1 ✓
126			4.1	1169.8 ✓
127			3.4	1170.5 ✓
TP	10.99	1182.30	2.63	1171.31 ✓
128			9.8	1172.5 ✓
129			6.3	1176.0 ✓
129+28.40			4.6	1177.7 ✓
129+59.0			3.7	1178.6 ✓

35

+0.9 +0.4 -1.3 -0.5	-0.5 -1.2 -0.5 +0.2 +0.1
3.8 2.8 5.5 4.7 4.2	4.7 5.4 4.7 4.8 4.3 ✓
25.0 18.0 11.0 7.0 0.0	9.0 12.0 13.0 17.0 25.0
+0.3 +0.3 -0.5 -1.4 -0.7	-0.7 -1.0 -0.8 -1.0
3.2 3.2 4.0 4.9 4.2	3.5 4.2 4.5 4.8 4.5 ✓
25.0 19.0 12.0 11.0 9.0	0.0 9.0 11.0 12.0 25.0
36" ELM - E Side Rd. 700 ft from 3 corners. Sta. 123+97	
+0.6 +0.1 -1.4 -0.7	-0.3 -1.1 +0.7 -0.9
7.4 4.8 9.4 8.7 8.0	8.3 9.1 7.3 8.9 ✓
25.0 19.0 12.0 9.0 0.0	6.0 10.0 15.0 25.0
+1.4 +1.4 -1.8 -0.5	-0.5 -1.2 -0.6 -0.4 +1.5
4.4 4.4 7.6 6.3 5.8	6.3 7.0 6.4 6.2 4.3 ✓
25.0 20.0 15.0 14.0 0.0	7.0 10.0 13.0 19.0 25.0
-1.2 -0.4 -0.5	-0.3 -1.9 -0.9 -1.4
5.8 4.5 4.6 4.1	4.4 6.0 5.0 5.5 ✓
25.0 20.0 11.0 0.0	7.0 12.0 14.0 25.0
-1.6 -1.3 -1.1 -0.4	-0.4 -1.4 -0.9
5.8 4.7 4.5 2.8 3.4	3.8 4.8 4.2 ✓
25.0 20.0 11.0 8.0 0.0	8.0 13.0 25.0
-0.6 -0.6 -0.3 -0.7	-0.8 +0.5 +1.1
10.4 10.4 10.1 10.5 9.8	10.6 9.3 8.7 ✓
25.0 21.0 13.0 12.0 0.0	11.0 15.0 25.0
+1.6 +1.3 +0.3 -0.9	+0.4 -0.1 +1.7 +3.5
4.7 5.0 6.0 4.2 6.3	5.9 6.4 4.6 2.8 ✓
25.0 21.0 14.0 12.0 0.0	8.0 9.0 18.0 25.0
+0.9 +0.9 0.0 -0.9	+1.6 +1.3 +3.0
3.7 3.7 4.6 5.5 4.6	3.0 3.9 1.6 ✓
25.0 22.0 15.0 13.0 0.0	17.0 18.0 25.0
+0.2 +0.7 +1.0 -0.1	+1.9
3.5 3.0 2.7 3.8 3.7	1.8 ✓
25.0 21.0 10.0 5.0 0.0	25.0

Sta	+	HI	-	Elev.
		1182.30		
130			5.8	1176.5 ✓
Int. Rd.				
T.P.	0.37	1179.89	2.48	1179.52 ✓
131			7.6	1172.3 ✓
131+800			10.4	1169.5 Rd. INT. ✓
132			11.0	1168.9 ✓
T.P.	2.87	1170.03	12.73	1167.16 ✓
133			6.0	1164.0 ✓
134			9.2	1160.8 ✓
T.P.	0.18	1158.92	11.29	1158.74 ✓
135			0.9	1158.0 ✓

Σ

+3.5	+4.1	+0.2	+0.5	0.0	+2.1	+3.5
<u>2.3</u>	<u>1.7</u>	<u>5.6</u>	<u>5.8</u>	<u>5.3</u>	<u>5.8</u>	<u>2.7</u>
25.0	17.0	8.0	0.0	13.0	22.0	25.0
			1178.1	1180.7	1181.80	
			<u>9.2</u>	<u>1.6</u>	<u>0.5</u>	
			P.I	PI	60.0	160.0

+1.2	+0.1	-0.8	-0.1	-0.8	+1.1	+2.6	
<u>6.4</u>	<u>7.5</u>	<u>9.4</u>	<u>7.6</u>	<u>4.7</u>	<u>9.4</u>	<u>6.8</u>	
25.0	12.0	11.0	0.0	9.0	12.0	15.0	
+1.8	+1.4	+0.6	-0.3	+0.2	-0.4	+1.9	+2.3
<u>8.6</u>	<u>9.2</u>	<u>9.8</u>	<u>10.7</u>	<u>10.4</u>	<u>10.2</u>	<u>10.8</u>	<u>8.5</u>
175.0	25.0	14.0	12.0	0.0	10.0	13.0	20.0
+1.9	-0.4			-0.1	-0.6	+1.4	+2.3
<u>9.2</u>	<u>11.1</u>	<u>11.0</u>		<u>11.1</u>	<u>11.6</u>	<u>9.6</u>	<u>8.7</u>
25.0	12.0	0.0		10.0	14.0	17.0	25.0

+3.9	+3.6	-0.5	0.0	-0.8	+2.1	+3.6	
<u>2.1</u>	<u>2.1</u>	<u>6.5</u>	<u>6.0</u>	<u>6.0</u>	<u>3.8</u>	<u>2.4</u>	
25.0	20.0	11.0	9.0	0.0	11.0	17.0	
+0.6	+0.3	-0.4	-0.6	-0.3	-1.1	0.0	+0.8
<u>9.6</u>	<u>8.9</u>	<u>9.6</u>	<u>9.8</u>	<u>9.2</u>	<u>9.5</u>	<u>10.3</u>	<u>9.2</u>
25.0	20.0	19.0	12.0	0.0	8.0	12.0	15.0

+0.3	-0.4	-0.6	-0.3	-0.3	-1.3	-0.7	+0.1
<u>0.6</u>	<u>1.3</u>	<u>1.5</u>	<u>1.2</u>	<u>0.9</u>	<u>1.2</u>	<u>2.2</u>	<u>1.6</u>
25.0	17.0	12.0	10.0	0.0	9.0	12.0	14.0

Sta	+	MI	-	Elev
		1158.92		
136		3.1		1155.8 ✓
136+49.30		4.0		1154.9 ✓
137		5.0		1153.9 ✓
138		6.5		1152.4 ✓
BM		5.73		1153.19 ✓
139		7.3		1151.6 ✓
140		7.8		1151.1 ✓
T.P.	10.71	1163.21	6.42	1152.50 ✓

140+46

Concrete Culvert.

141 12.0 1151.2 ✓

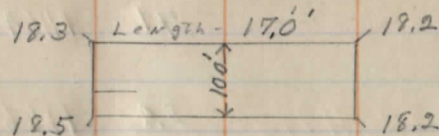
142 12.0 1151.2 ✓

2

+0.4	-0.6	-0.4		-0.2	-1.2	-1.0	
2.7	3.7	3.5	3.1	3.3	4.3	4.1	✓
25.0	14.0	8.0	0.0	9.0	12.0	25.0	
+0.8	-0.5	-1.0	-0.2	-0.2	-1.3	-0.9	-0.5
3.2	4.5	5.0	4.2	4.0	4.2	5.3	4.9 ✓
25.0	12.0	11.0	8.0	0.0	8.0	11.0	12.0
-0.4	-0.3	-0.8	-0.2	0.0	-0.7	-0.7	+0.1
5.7	5.3	5.8	5.2	5.0	5.8	5.7	5.7 ✓
25.0	12.0	11.0	8.0	0.0	8.0	11.0	19.0
-1.5	-0.6			0.0	-1.0	-0.6	-1.2
8.0	7.1	6.5		6.5	7.5	7.1	7.7 ✓
25.0	10.0	0.0		10.0	13.0	14.0	25.0

W.S. side 24" Elm S.E. of Concrete Culvert.

-1.7	-0.9		-0.3	-1.0	-0.5	+0.2	✓
9.8	8.2	7.3	7.6	8.3	7.8	7.1	✓
25.0	12.0	0.0	11.0	14.0	15.0	25.0	
-1.3	-0.7	-1.3	-0.4	-0.1	-0.1	-0.6	-0.4
9.1	8.5	9.1	8.2	7.8	7.9	7.9	8.4 ✓
25.0	15.0	13.0	10.0	0.0	12.0	14.0	15.0
						21.0	25.0



-0.6	-0.8	-1.0	-0.3	-0.1	-1.5	-0.6	-0.3
12.6	13.5	12.0	12.3	12.0	12.1	13.5	12.6 ✓
25.0	19.0	12.0	10.0	0.0	10.0	13.0	15.0

-0.6	-0.2	-0.7		-0.4	-0.8	-0.8	✓
12.6	12.2	12.7	12.0	12.4	12.8	12.8	✓
25.0	12.0	11.0	0.0	11.0	12.0	25.0	

2

Sta.	+	HI	-	Elev.
		1163.21		
143			11.1	1152.1 ✓
143+50.0			10.2	1153.0 ✓
144			8.3	1154.9 ✓
145			3.6	1159.6 ✓
146			0.9	1162.3 ✓
T.P.	8.99	1171.65	0.55	1162.66 ✓
147			8.2	1163.5 ✓
148			7.1	1164.6 ✓
149			5.4	1166.3 ✓
150			4.0	1167.7 ✓
150+40.0			6.4	1165.3 ✓
BM	5.03	1175.25	1.43	1170.22 ✓

-1.2	-0.9	+0.1	-0.5		0.0	-0.5	-0.9			
<u>12.3</u>	<u>12.0</u>	<u>11.0</u>	<u>11.6</u>	<u>11.1</u>	<u>11.1</u>	<u>11.6</u>	<u>12.0</u>			
25.0	16.0	13.0	10.0	0.0	9.0	12.0	25.0			
	-0.9	+0.2	-0.4		+0.1	-0.8				
	<u>11.1</u>	<u>10.0</u>	<u>10.0</u>	<u>10.2</u>	<u>10.1</u>	<u>11.0</u>				
	25.0	9.0	8.0	0.0	16.0	25.0				
+3.7	+1.5	-0.5	-0.6	0.0	-0.2	+2.0	+1.8			
<u>4.6</u>	<u>6.5</u>	<u>8.8</u>	<u>8.9</u>	<u>8.3</u>	<u>8.3</u>	<u>8.5</u>	<u>6.3</u>	<u>6.5</u>		
35.0	25.0	19.0	14.0	12.0	0.0	9.0	16.0	25.0		
	+2.5	+0.7	0.0		-0.1	+0.5	+0.1	+1.9	+3.1	+2.6
	<u>11</u>	<u>2.9</u>	<u>3.6</u>	<u>3.6</u>	<u>3.7</u>	<u>3.1</u>	<u>3.5</u>	<u>1.7</u>	<u>0.5</u>	<u>1.0</u>
	25.0	12.0	11.0	0.0	10.0	14.0	21.0	25.0	27.0	35.0
	+4.9	+0.2	-0.4		-0.3	+0.3	-0.5			
	<u>4.0</u>	<u>0.7</u>	<u>1.8</u>	<u>0.9</u>	<u>1.2</u>	<u>0.6</u>	<u>1.4</u>			
	25.0	10.0	9.0	0.0	12.0	13.0	25.0			
	+3.6	+0.3	-0.1		0.0	+0.3	+0.5	+0.4	-2.4	
	<u>4.6</u>	<u>7.9</u>	<u>8.3</u>	<u>8.2</u>	<u>8.2</u>	<u>7.9</u>	<u>7.7</u>	<u>7.8</u>	<u>10.6</u>	
	25.0	14.0	10.0	0.0	12.0	13.0	17.0	25.0	35.0	
	+0.8	+0.7	-0.2		0.0	+0.5	+0.6	-0.1		
	<u>6.3</u>	<u>6.4</u>	<u>7.3</u>	<u>7.1</u>	<u>7.1</u>	<u>6.6</u>	<u>6.5</u>	<u>7.2</u>		
	25.0	11.0	10.0	0.0	8.0	9.0	17.0	25.0		
	+1.8	+2.3	+1.5	-0.2		0.0	+1.1	+2.3	+2.2	
	<u>3.6</u>	<u>3.1</u>	<u>3.9</u>	<u>5.6</u>	<u>5.4</u>	<u>5.1</u>	<u>4.3</u>	<u>3.1</u>	<u>3.2</u>	
	35.0	25.0	13.0	10.0	0.0	17.0	8.0	16.0	25.0	
	+1.7	+1.4	+0.2		-0.1	+1.7	+1.7			
	<u>2.3</u>	<u>2.6</u>	<u>3.5</u>	<u>4.0</u>	<u>4.1</u>	<u>2.3</u>	<u>2.3</u>			
	25.0	12.0	8.0	0.0	9.0	13.0	25.0			
	+3.1	+2.6	+1.4	-0.1		+0.1	+0.1	-1.2		
	<u>3.5</u>	<u>3.8</u>	<u>5.0</u>	<u>6.5</u>	<u>6.4</u>	<u>6.2</u>	<u>6.3</u>	<u>4.6</u>		
	25.0	17.0	11.0	8.0	0.0	10.0	15.0	25.0		

E Root 3rd Mahle - 18" - 14 ft Warren Chamberlain

Sta	+	HI	-	Elev.
		1175.25		
151		10.9		1164.4 ✓
151+60				Iron Pipe
152		10.9		1164.4 ✓
153		9.5		1165.8 ✓
153+50.0		8.6		1166.7 ✓
154		7.3		1168.0 ✓
155		4.0		1171.3 ✓
156		3.2		1172.1 ✓
T.P.	6.80	1179.56	2.9	1172.76
BM		2.56		1177.00

Cont. - Page 49

+2.7	-0.7	-0.2		-0.3	-1.2	-3.1	
<u>8.2</u>	<u>11.6</u>	<u>11.1</u>	<u>10.9</u>	<u>11.2</u>	<u>12.1</u>	<u>14.0</u>	✓
25.0	11.0	10.0	0.0	16.0	17.0	25.0	
				Diam. - 12"			
12.2	Length - 20.0'					12.8	
+0.1	+0.1	-0.3		-0.2	-0.8	-0.9	
<u>10.8</u>	<u>10.8</u>	<u>11.2</u>	<u>10.9</u>	<u>11.1</u>	<u>11.7</u>	<u>11.8</u>	✓
25.0	12.0	7.0	0.0	15.0	20.0	25.0	
+1.3	+0.1	-0.5		-0.1	-1.5		
<u>8.2</u>	<u>8.8</u>	<u>10.0</u>	<u>9.5</u>	<u>9.6</u>	<u>11.0</u>		✓
25.0	8.0	7.0	0.0	20.0	25.0		
+1.1	-0.1	-0.7	-0.1		0.0	-0.9	-1.1
<u>7.5</u>	<u>8.7</u>	<u>9.9</u>	<u>9.7</u>	<u>8.6</u>	<u>8.6</u>	<u>8.9</u>	<u>9.7</u>
25.0	7.0	6.0	5.0	0.0	12.0	13.0	14.0
+4.5	+3.4	-1.1	-0.4		0.0	-0.8	+1.2
<u>2.9</u>	<u>3.9</u>	<u>4.4</u>	<u>4.7</u>	<u>7.3</u>	<u>4.3</u>	<u>8.1</u>	<u>6.1</u>
25.0	17.0	6.0	5.0	0.0	12.0	13.0	18.0
+3.4	+2.1	+0.2	-0.8	-0.2	-1.0	0.0	-0.9
<u>8.6</u>	<u>1.7</u>	<u>3.9</u>	<u>7.8</u>	<u>4.0</u>	<u>4.2</u>	<u>5.0</u>	<u>4.0</u>
25.0	16.0	9.0	8.0	7.0	0.0	11.0	13.0
+2.0	-0.1	-0.8	-0.1		+0.1	-0.7	+0.3
<u>1.2</u>	<u>3.3</u>	<u>3.0</u>	<u>3.2</u>	<u>3.2</u>	<u>3.1</u>	<u>3.7</u>	<u>2.9</u>
25.0	8.0	7.0	6.0	0.0	12.0	14.0	16.0

W. Root - 4th Maple 18' in frt Walter Lewis

47
 Recheek Between Sta. 101 and 71,
 Apr. 30, ^{Ewell} _{Grav.}

Sta.	+	H.I.	-	Elev.	
B.M.				1162.21	✓
T.P.	1.80	1164.01	10.22	1153.79	✓
T.P.	5.22	1159.01	1.84	1157.17	✓
T.P.	8.19	1165.36	1.29	1164.07	✓
T.P.	9.10	1173.17	2.20	1170.97	✓
BM	10.03	1181.00	0.76	1180.24	✓
T.P.	7.08	1194.32	0.93	1186.39	✓
BM.	10.58	1196.97	4.64	1192.33	✓

W. Root 18" Maple by gate in frt house E Side Rd.
 S.W. Cor. of Abutment (North) of Bridge at Sta 100+93

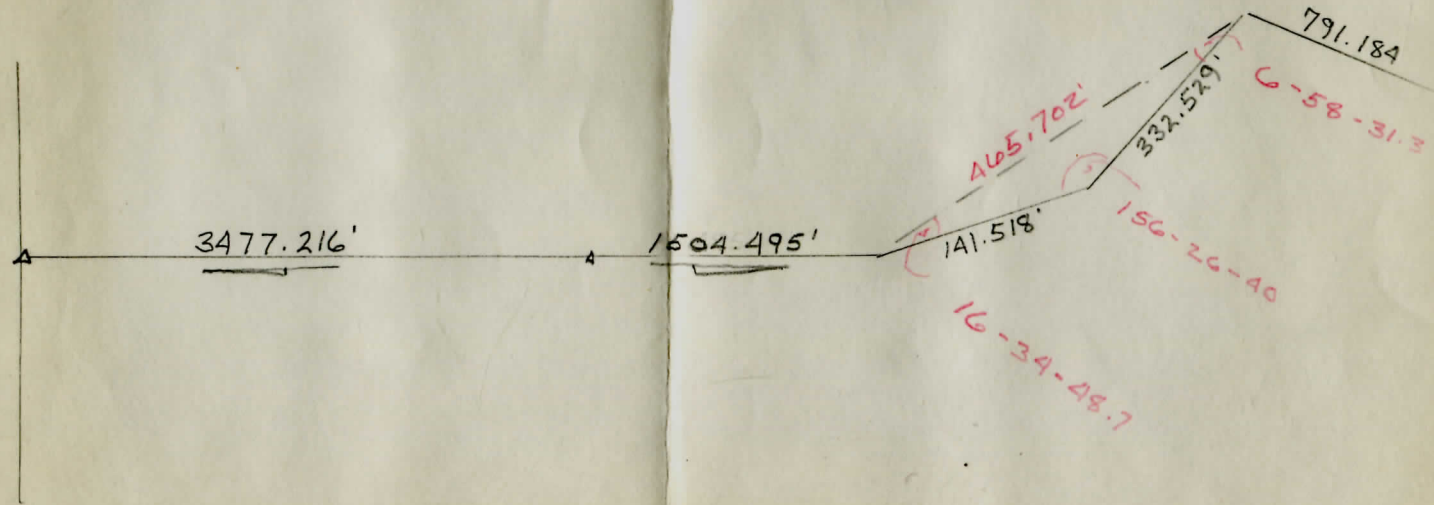
19" ELM. E Side Rd. S.W. of Sugar House ^{1189.85} Sta. 80+90

20" ELM W. Side Rd. Opp. Springer Res. ^{1191.81}

BROWN RD
TRAVERSE

104	47	82.45
16	34	48.7
148	15	33.55

101	17	46
6	58	31.3
108	15	57.3



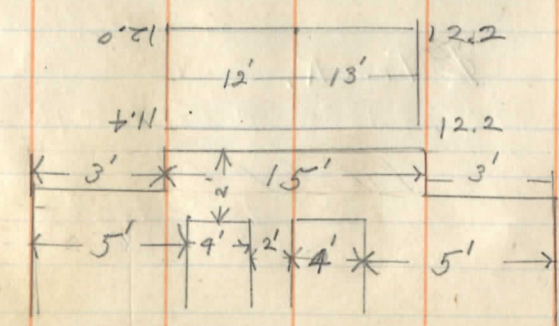
29 Cross-section and Profile
 Bass Lake Rd. Cont. ELwell
 Apr. 30-19 Grav.

Sta.	+	HI	-	Elev.
BM				1177.00
157	6.39	1183.39	9.7	1173.7 ✓
158			8.2	1175.2 ✓
159			7.7	1175.7 ✓
160			6.9	1176.5 ✓
160+60			8.6	1175.8 ✓
161			9.2	1174.2 ✓
162			9.2	1174.2 ✓
163			9.4	1174.0 ✓

163+54 \swarrow Bridge \swarrow stone Culvert

W. Root 4th. Maple - 18" - in fr. Walter Lewis.

+2.0	-1.2	-0.9	-0.1	0.0	-0.6	+0.7	+0.2
<u>7.7</u>	<u>8.5</u>	<u>15.6</u>	<u>9.7</u>	<u>9.7</u>	<u>10.3</u>	<u>9.0</u>	<u>9.5</u>
25.0	15.0	7.0	5.0	0.0	12.0	13.0	17.0
25.0	15.0	7.0	5.0	0.0	12.0	13.0	17.0
+1.9	-0.6	-0.1	-0.2	-0.8	-0.2	-0.1	
<u>6.3</u>	<u>8.8</u>	<u>8.3</u>	<u>8.2</u>	<u>8.4</u>	<u>9.0</u>	<u>8.4</u>	<u>8.3</u>
25.0	9.0	6.0	0.0	13.0	14.0	15.0	25.0
+3.0	+1.3	-0.4		0.0	+0.8		
<u>4.7</u>	<u>6.4</u>	<u>8.1</u>	<u>7.7</u>	<u>7.7</u>	<u>5.9</u>		
25.0	9.0	6.0	0.0	13.0	25.0		
+3.4	+2.4	+0.9	0.4	-0.1	+0.7		
<u>3.5</u>	<u>4.5</u>	<u>6.0</u>	<u>7.3</u>	<u>6.9</u>	<u>7.0</u>		
25.0	12.0	7.0	6.0	0.0	14.0		
+3.5	+1.2	-0.1		-0.2	+0.2	-3.1	-4.0
<u>5.7</u>	<u>7.9</u>	<u>8.7</u>	<u>8.6</u>	<u>8.9</u>	<u>8.4</u>	<u>11.7</u>	<u>7.6</u>
25.0	9.0	6.0	0.0	11.0	15.0	25.0	35.0
+2.9	+0.7	-0.3		+0.1	-2.4	-3.2	
<u>6.3</u>	<u>8.5</u>	<u>8.5</u>	<u>9.2</u>	<u>9.1</u>	<u>11.6</u>	<u>12.4</u>	
25.0	11.0	8.0	0.0	14.0	18.0	25.0	
+2.6	+1.4	+0.9		-0.4	-1.6	-2.3	
<u>6.6</u>	<u>7.8</u>	<u>8.3</u>	<u>9.2</u>	<u>9.6</u>	<u>10.8</u>	<u>11.5</u>	
35.0	25.0	14.0	0.0	13.0	17.0	25.0	
+0.2	-0.8			+0.1	-0.9	-2.0	
<u>9.2</u>	<u>10.2</u>	<u>9.4</u>	<u>9.3</u>	<u>10.3</u>	<u>11.3</u>		
25.0	14.0	0.0	11.0	12.0	25.0		



S

N

Sta.	+	HI	-	Elev.
		1183.89		
164			7.6	1175.8 ✓
T.P.	9.03	1186.44	5.95	1177.41 ✓
165			7.5	1175.9 1178.9 ✓
166			1.8	1182.1 1185.1 ✓
B.M.			0.96	1185.48 ✓

166+50	10.43	1196.21	8.3	1197.9 ✓
167			4.6	1191.6 ✓
167+23			1.8	1194.4 ✓

167+27.5 ⊥ Track

-1.3	-1.4	2.3	-0.2		-0.1	-1.6	-0.3	-0.7
8.9	7.7	7.7	7.8	7.6	7.7	7.2	7.9	8.3 ✓
25.0	20.0	19.0	12.0	00	9.0	13.0	15.0	25.0

N.E. Cor. W. Parapet Stone Culvert Below Hender ^{1111.00} ₈₁₀₀

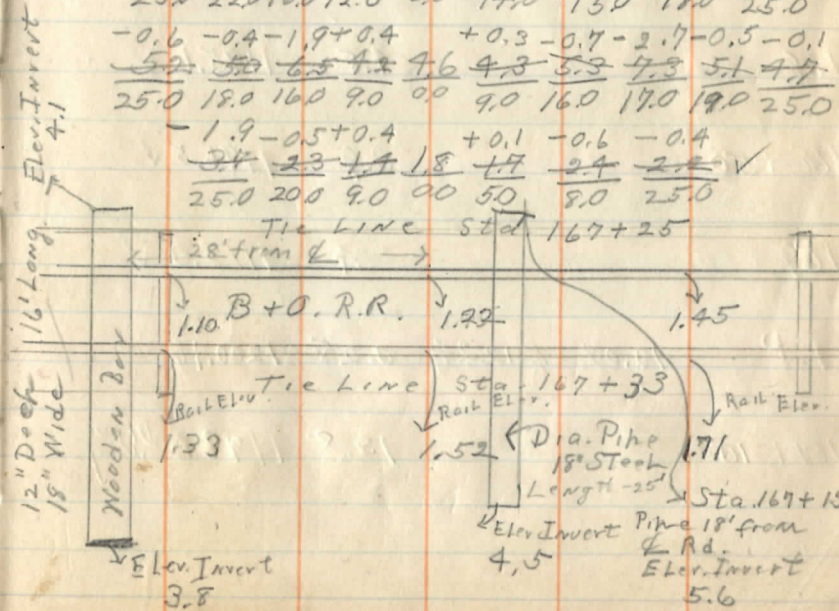
+1.5	-0.2	-0.4	-1.2	-0.3		0.0	-0.9	+1.4	+3.6
6.8	7.7	7.9	8.7	7.8	7.5	7.5	8.4	8.1	8.9 ✓
25.0	21.0	18.0	17.0	15.0	00	8.0	12.0	15.0	25.0
+1.2	-0.1	-0.8	-0.4			0.0	-1.4	+2.6	
0.1	1.4	2.1	1.4	1.3	1.3	2.7	1.0	✓	
25.0	17.0	16.0	14.0	00	10.0	12.0	25.0		

26" Maple at L. Hendershotts.

+0.1	-0.7	-0.8	0.0		+0.1	-2.3	+0.2	+1.0
8.2	9.0	9.1	9.3	8.3	8.2	10.6	9.1	7.3 ✓
25.0	22.0	16.0	12.0	00	14.0	15.0	18.0	25.0

-0.6	-0.4	-1.9	+0.4		+0.3	-0.7	-2.7	-0.5	-0.1
5.2	5.0	6.5	7.2	7.6	4.3	5.3	7.3	5.1	4.7 ✓
25.0	18.0	16.0	9.0	00	9.0	16.0	17.0	19.0	25.0

-1.9	-0.5	+0.4			+0.1	-0.6	-0.4
3.4	2.3	1.4	1.8	1.7	2.4	2.2	✓
25.0	20.0	9.0	00	50	8.0	25.0	



Sta.	+	HI	-	Elev.
		1196.21		✓
164+33			1.5	1194.7 ✓
164+38			1.5	1194.7 ✓
R.M.	6.31	1191.79		1185.98 ✓
B.M.			5.91	1185.88 ✓
T.R.	9.73	1200.44	1.08	1190.71 ✓
167+44			5.6	1194.8 ✓
167+50			5.6	1194.8 ✓
168			4.8	1195.6 ✓
168+50			3.9	1196.5 ✓
169			2.4	1198.0 ✓
T.P.	12508	1212.24	0.28	1200.16 ✓
169+10			13.8	1198.4 ✓ Drive Way.

11.3

-0.2									
<u>1.7</u>									
25.0									
-1.5	0.0								
<u>3.0</u>	<u>1.5</u>	<u>1.5</u>	<u>1.8</u>	<u>2.2</u>	<u>2.8</u>				
25.0	7.0	0.0	7.0	17.0	25.0				

Hail E. Root 26" Maple Kr. L. Henderschott's
 " W. " 26" " " " "

+1.3	-1.9	-0.3	+1.4	+1.3						
<u>4.2</u>	<u>7.5</u>	<u>5.9</u>	<u>4.2</u>	<u>4.3</u>	5.6	4.9	4.0	8.4	6.6	5.0
35.0	27.0	2.5	22.0	12.0	0.0	7.0	14.0	20.0	25.0	35.0
-0.5	-0.6	-1.0	-0.4	+0.7						
<u>6.1</u>	<u>6.2</u>	<u>6.6</u>	<u>6.0</u>	<u>4.9</u>	5.6	5.2	6.1	5.1	6.7	6.8
35.0	25.0	24.0	23.0	16.0	0.0	7.0	16.0	19.0	21.0	25.0
-0.6	-0.3									
<u>5.4</u>	<u>5.1</u>	<u>4.8</u>	<u>5.0</u>	<u>6.4</u>	<u>4.8</u>	<u>5.0</u>				
25.0	12.0	0.0	12.0	14.0	19.0	25.0				
-0.1	-0.3									
<u>4.8</u>	<u>4.2</u>	<u>3.9</u>	<u>3.8</u>	<u>4.6</u>	<u>3.9</u>	<u>3.5</u>	<u>3.0</u>			
25.0	19.0	0.0	13.0	15.0	17.0	22.0	25.0			
+1.4	+0.8	-0.5								
<u>1.6</u>	<u>1.6</u>	<u>3.9</u>	<u>2.4</u>	<u>2.5</u>	<u>2.0</u>	<u>2.8</u>	<u>1.7</u>	<u>0.3</u>		
25.0	16.0	12.0	0.0	8.0	14.0	16.0	18.0	25.0		

+1.1	+1.3	-1.4							
<u>12.7</u>	<u>12.5</u>	<u>15.0</u>	<u>13.8</u>	<u>14.0</u>	<u>11.7</u>	<u>11.8</u>			
25.0	18.0	13.0	0.0	8.0	25.0	50.0			

Sta.	+	H.I.	-	Elev.
		1212.24		
169+50			11.9	1200.3 ✓
170			9.6	1202.6 ✓
170+50			7.2	1205.0 ✓
171			4.0	1209.2 ✓
T.P.	12.93	1224.58	0.59	1211.65 ✓
171+50			12.4	1212.2 ✓
171+92				
172			8.3	1216.3 ✓ Driveway
172+50			5.0	1219.6 ✓
T.P.	12.64	1236.31	0.34	1224.24 ✓
173			13.7	1222.6 ✓

+1.7	+0.6	-0.5	-0.3	-0.8	+0.5	+1.6
10.2	11.3	12.4	11.9	12.0	12.7	11.4
25.0	15.0	13.0	0.0	10.0	14.0	19.0
+3.1	+2.9	-0.7	-0.3	-1.3	+2.4	
6.5	6.7	10.2	9.6	9.9	10.9	7.2
25.0	21.0	14.0	0.0	12.0	14.0	25.0
+2.6	-0.6	0.0	0.0	-1.0	+0.3	+3.6
4.6	7.8	7.2	9.2	7.2	8.2	6.9
25.0	14.0	12.0	0.0	11.0	14.0	15.0
+2.6	+2.6	0.5	-0.1	0.0	-1.2	+3.3
1.4	1.4	4.5	4.4	4.0	4.0	5.2
25.0	20.0	14.0	12.0	0.0	10.0	13.0

Tile Drain Rt. Side Rd. Open end. Elev. Inserts 9/1
Run on Rt. Side to Sta. 174+38. Dia. 12"

+3.0	+2.8	-0.6	+0.1	-0.9	+3.2	+3.5
9.4	9.6	13.0	12.4	12.3	13.3	9.2
25.0	20.0	15.0	0.0	13.0	15.0	22.0
+2.8	+2.5	-0.8	-0.1	+0.2	+1.7	+3.0
5.5	5.8	9.1	8.4	8.3	8.1	6.6
25.0	22.0	15.0	13.0	0.0	7.0	13.0
+2.4	+2.0	-0.5	0.0	+0.2	+2.6	
2.6	3.0	5.5	5.0	5.0	4.8	2.4
25.0	21.0	14.0	12.0	0.0	9.0	25.0

+2.2	+2.2	-0.3	-0.3	-0.9	-0.3	-0.1
11.5	11.5	14.0	14.0	14.6	14.0	13.7
25.0	22.0	19.0	15.0	14.0	13.0	0.0
						10.0
						25.0

L

Sta.	+	HI	-	Elev.
		1236.31		
173+50			10.1	1226.2 ✓
174			8.1	1228.2 ✓
174+20			7.2	1229.1 ✓ Driveway
174+38				
174+50			5.6	1230.7 ✓
174+70			4.6	1231.7 ✓ Driveway
174+62			10"	Tile
174+78			10"	"
T.P.	9.45	1245.54	0.22	1236.09 ✓
175			12.2	1233.3 ✓
175+40			10.0	1235.5 ✓

+1.0	+1.1	-0.8		+0.3	+1.0.6		
<u>9.1</u>	<u>9.0</u>	<u>10.9</u>	<u>10.1</u>	<u>9.8</u>	<u>8.5</u>		
25.0	17.0	13.0	0.0	9.0	25.0		
+1.5	+1.4	-0.3		+0.4	+2.3		
<u>6.6</u>	<u>6.7</u>	<u>8.4</u>	<u>8.1</u>	<u>7.7</u>	<u>5.8</u>		
35.0	25.0	14.0	0.0	10.0	25.0		
+1.9	+1.8	-0.7	+0.2		+0.2	+2.3	+2.6
<u>5.9</u>	<u>5.4</u>	<u>7.9</u>	<u>7.0</u>	<u>7.2</u>	<u>7.0</u>	<u>4.7</u>	<u>4.6</u>
25.0	21.0	16.0	10.0	0.0	9.0	25.0	35.0

Tile Drain Rt. Side Rd. 12" Dia. Elev. Invert. 7.0
Runs from Sta. 171+92.

+1.9	+2.1	+0.5	+0.1	-0.8	-0.1	-0.1	+0.6	+2.5
<u>3.7</u>	<u>3.5</u>	<u>5.1</u>	<u>5.5</u>	<u>6.4</u>	<u>5.7</u>	<u>5.6</u>	<u>5.7</u>	<u>5.0</u>
25.0	23.0	19.0	16.0	15.0	9.0	0.0	17.0	19.0
+2.7	+2.9	+0.3	-0.7	-0.1		+0.3	+2.7	
<u>1.9</u>	<u>1.4</u>	<u>2.5</u>	<u>2.7</u>	<u>4.7</u>	<u>4.6</u>	<u>4.3</u>	<u>1.9</u>	
25.0	22.0	19.0	15.0	9.0	0.0	9.0	2.5	

Under Drive → Invert Elev - 5.6
" " -

+2.6	-0.9	-0.1		+0.1	+0.5	+2.8	
<u>9.6</u>	<u>7.3</u>	<u>7.2</u>	<u>12.2</u>	<u>12.1</u>	<u>11.7</u>	<u>9.4</u>	
25.0	16.0	10.0	0.0	10.0	18.0	25.0	
+2.6	+2.6	0.4	+0.1		+0.2	-0.9	+3.0
<u>7.4</u>	<u>7.4</u>	<u>7.4</u>	<u>7.9</u>	<u>10.0</u>	<u>9.8</u>	<u>10.9</u>	<u>7.0</u>
35.0	25.0	13.0	11.0	0.0	12.0	14.0	25.0

L

Sta.	+	HI	-	Elev.
		1245.54		
175+50			9.3	1236.2 ✓
176			5.7	1239.8 ✓

176+10

Drain Pipe
Rt. Side
Invert -
10" Pipe
5.7

176+50

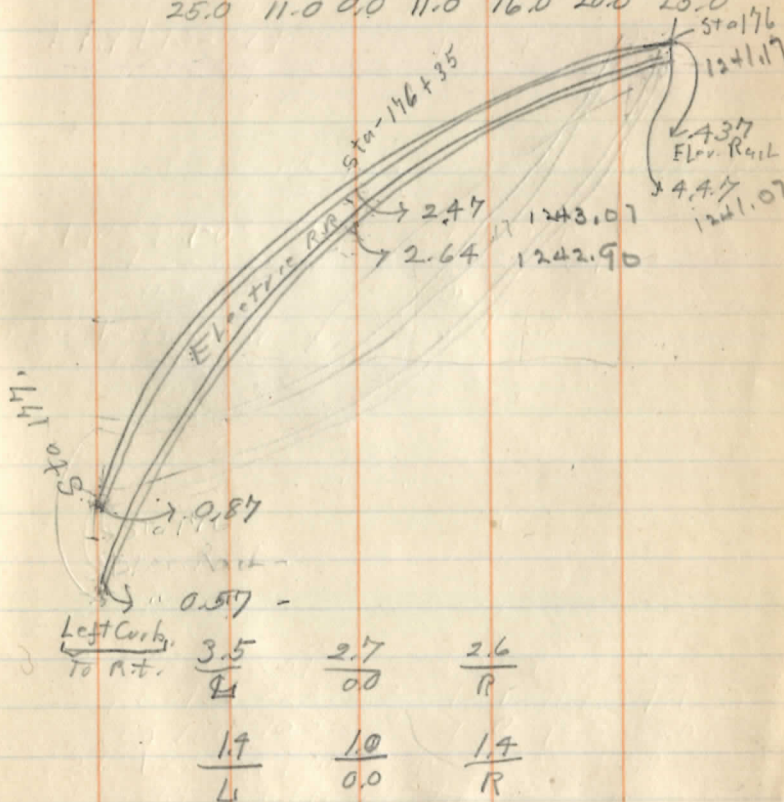
2.7 1242.8 ✓ Pavement

177

1.0 1244.5 ✓ "

BM. 8.11 1253.26 0.39 1245.15 ✓

-0.3	-0.2	+0.7	-0.2	+0.1	-0.9	+0.3	+2.8
9.6	9.5	2.6	9.5	9.3	9.2	10.2	9.0
35.0	25.0	17.0	13.0	0.0	11.0	14.0	19.0
							25.0
		+1.1	+0.9		0.0	-0.5	+1.2
		4.6	4.8	5.7	5.7	6.2	4.5
		25.0	11.0	0.0	11.0	16.0	20.0



Top Left curb over + in side of curb opposite fire hydr

Sta.	r	HI	-	Elev.	
		1253.26			
177+50			6.6	1246.7	✓ Pavement
178+25			3.0	1250.3	✓ "



	at Curb		at Curb
	$\frac{7.0}{L}$	-	$\frac{6.6}{0.0}$
			$\frac{7.0}{R}$
	$\frac{3.4}{L}$		$\frac{3.0}{0.9}$
			$\frac{3.4}{R}$

63/ + H1 - E
 BASS LAKE RD. from X with
 # 322 HY 11/20/47
 B.M. 4.15 104.15 100.00 ass'd

0			3.9	100.2
1	↓			
2	N			
3	0			
4	R			
4	TH			
4+03				
5				
6				
TP.	2.64	100.36	6.43	97.72
7				
8				
9				
10				
11				
11+85				
12				
TP.	4.75	99.13	5.98	94.38
13				
14				
14+12				
P.M.			3.77	SW Root 27" pipe
15				
16				
17				
18				
19				

69
 -W ditch ♀ E ditch

Sple E root 6" Map. 30' E of Bass Lake
 Rd ± 125' N of #322
 Intersection 3.9 100.2

98.3	5.8	4.3	99.8	6.0	4.0	98.1	
97.8	6.3	4.5	99.6	6.2		98.0	
97.3	6.8	4.9	99.2	6.7		97.4	
96.7	7.4	5.5	98.6	7.2		97.0	
Ditch From N EDGE HOUSE							
96.2	7.9	5.9	98.2	7.7		96.4	
96.0	8.1	6.2	98.0	8.1		96.0	
95.7	4.7	2.9	97.5	4.7		95.7	
95.1	5.3	3.7	96.7	5.4		95.0	
94.1	6.3	4.7	95.7	6.5		93.9	
93.4	7.0	5.4	95.0	7.2		93.2	
93.0	7.4	5.7	94.7	7.7		92.7	
	in corr.						
	F.L. pipe	7.5	92.9	5.6	94.8	92.4	
				14" E	92.0	8.0	
					8.9	field drain	
93.0	7.4	5.6	94.8	7.9		92.5	
						inlet	
		93.0					
WATER		6.1		4.6	94.5	6.4	92.7
WATER		92.8		4.7	94.4	6.2	92.9
		6.3					
93.3	5.8	4.7	94.4	6.1		93.0	
93.2	5.9	4.9	94.2	6.4		92.7	
92.9	6.2	5.2	93.9	6.6		92.5	
92.3	6.8	5.5	93.6	7.1		92.0	
92.3	6.8	5.3	93.8	6.7		92.4	

65

99.13

20

W 2

E

CE

66

92.6

6.5

5.0 92.1

6.5

92.6

67

	+	-	-	-
B.M.	4.37	104.37		100.00
1				98.7 D. 17.8 45°
1+70				97.9
2				97.5
3				
T.P.	4.09	102.48	5.98	98.39
4				
4+95				95.3
5				
6				94.8
7				94.3
7+90				FL. 12" X rd. culv + 93.0

CLEVELAND-MEAD. RD
 0+0 = intersection with Bass
 Lake Rd. Stationing runs E

N
 2.764

101 N
 E

S

67

Spk E Root 6" MAP 30' E of Bass Lake

NE Quad intersect	5.7 (98.7)	
FL. 12" CONC PIPE	6.5 (97.9)	4.6 (99.8)
	6.9 (97.5)	5.0 (99.4)
		5.5 (98.9)
		4.1 (98.4)
END 12" CONC PIPE	7.2 (95.3)	
		4.7 (97.7)
	7.7 (94.8)	5.2 (97.3)
	8.2 (94.3)	6.2 (96.3)
12" Rd. CULV	9.5 (93.0)	

64
MAY 2, 1953

SCHAUSS
MAYNARD
BOTTOM DRIVE

CUTTS RD T.H. 72



31+36.94

(Gone)
SPK S Root
28" ELM

SPK SE Side
CEI # 551689

SPK NE Side
CEI #

37+40.5

P.O.T.

SPK BE Side
CEI #

749.16

Nail W NE Root
34" Maple
S&W in E. root

44+89.66

S&W in SE. root
14" Maple

Nail W SE Root
26" Maple

Former \pm notes
FB. 91 pg 68

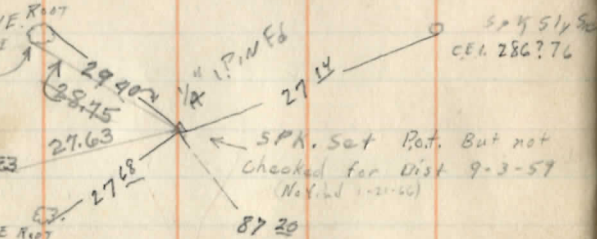
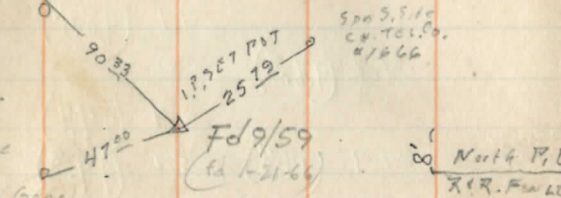
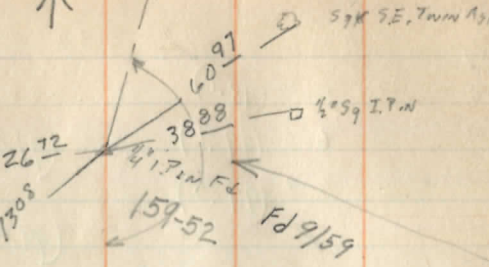
SPK W side
24" Elm 3rd Tree
from Drive

X in SW Cor
W. Hdwl

X in SE Cor
E. Hdwl.

SR 26

SPK fd 7-3-59



70

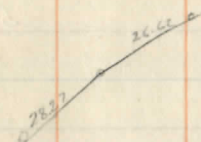
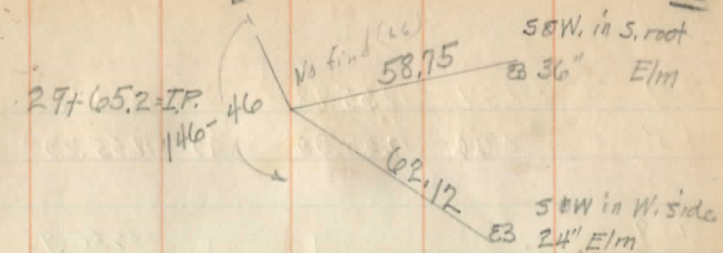
29+65.2=IP.
146-46

245.22

\pm

31+36.94

\pm



See F.B. 91 Pg. 77 for
1966 \pm notes

B₂ 11.57 1255.78 1244.21 →
 TP 3.66 1258.95 0.49 1255.29 ✓

49 1250.9

48 49.4

ELEV. Rd
 5.2-5.3
 STA Ends } → CULVERT

47+71 culvert → 49.3

47 49.6

+50 50.3

46 51.7 by drive

+50 53.5

45 55.5

44+80 55.6

SE. 2 CULVERT 7' 1/2" dia 1/2" S. Side V. 2 R. 6 = 283' West
 of CULVERT RD = 57A 60x24 on R76.

0-top

8.1

9.6

12.0
FL

9.7

12.7
FL

9.4

8.7

54.2 53.9 51.7 51.4
 $\frac{4.8}{38}$ $\frac{5.1}{26}$ $\frac{7.3}{9}$ $\frac{7.6}{5}$ 7.3

51.1 50.6 52.5 52.4
 $\frac{7.9}{15}$ $\frac{8.4}{18}$ $\frac{6.5}{23}$ $\frac{4.9}{29}$ $\frac{6.6}{30}$

56.4 55.6 53.1 53.2
 $\frac{2.6}{33}$ $\frac{1.0}{30}$ $\frac{3.4}{24}$ $\frac{5.8}{10}$ 5.5

52.9 52.1 54.3 54.3
 $\frac{6.1}{13}$ $\frac{6.9}{16}$ $\frac{4.7}{20}$ $\frac{4.7}{30}$

56.9 56.6 54.5 55.2
 $\frac{2.1}{32}$ $\frac{0.6}{30}$ $\frac{2.4}{16}$ $\frac{4.5}{12}$ $\frac{3.8}{9}$ 3.5

54.9 55.0 56.2 57.4
 $\frac{4.1}{10}$ $\frac{4.0}{13}$ $\frac{8.8}{17}$ $\frac{1.6}{30}$

57.4 56.6 54.5 55.1
 $\frac{1.6}{33}$ $\frac{2.4}{18}$ $\frac{4.5}{13}$ $\frac{3.9}{10}$ 3.4

55.4 55.6 56.8
 $\frac{3.6}{9}$ $\frac{3.4}{14}$ $\frac{2.2}{35}$

73

+

41
1255.95

Elev

77+50 5th End Cutts Rd
5/2/53 53.8

44+0 49.4

43+50 45.9

TP 0.30 1247.63 ✓ 11.62 1247.33 ✓

43+0 43.9

42+50 42.1

42+0 40.9

41+50 39.5

B.M. 2.35 1245.28

41+0 37.2

TP. 0.90 1236.73 ✓ 11.80 1235.93 ✓

40+00 37.3

38+53 cur → 12" Conc Pipe 29.6

E

W

38

56.8 (0.62/30) 56.4 55.1 52.6 53.1 53.5 54.15 55.2 54.9
 $\frac{2.2}{31}$ $\frac{2.6}{27}$ $\frac{3.9}{19}$ $\frac{6.4}{13}$ $\frac{5.9}{10}$ 5.2 $\frac{5.5}{9}$ $\frac{4.8}{13}$ $\frac{3.8}{27}$ $\frac{4.1}{42}$
 drive drive

53.7 52.7 48.6 49.7 48.8 51.2 51.9
 $\frac{3.4}{20}$ $\frac{5.3}{30}$ $\frac{6.8}{20}$ $\frac{10.4}{14}$ $\frac{9.8}{11}$ $\frac{9.6}{13}$ $\frac{10.2}{18}$ $\frac{7.8}{18}$ $\frac{7.1}{30}$

$\frac{9.3}{30}$ 13.1

B.M. NE of Conc Pipe 4 E. Side 42+0

11.10. 7.1 $\frac{10.2}{F.L.}$

5th. End Cuts TR,
5/2/53

38

30.6

37

33.3

36

30.4

35

26.8

B.M.

0.40

1236.33

6.1

3.4

6.3

9.9

BOB FOWLER'S GARAGE DOOR SILL N. END E. Side ± 37460

Topo Cotts Rd
5-2-53

446+12 Dist Dr.

+ 50

25' S END HEDGE

45+0

25' 26" MAPLE

+ 61 3" MAP

27.5

- 18' N. END HEDGE

+ 79 CE1

24.5

+ 76

+ 80

26.5' 30" MAPLE
17.5' Hedge
drive NW 1/4

+ 70

+ 68

6" ELM

44+50

6" ELM 24

+ 35

70 3 6" Mt. Ash

+ 29

+ 09

25' Barn

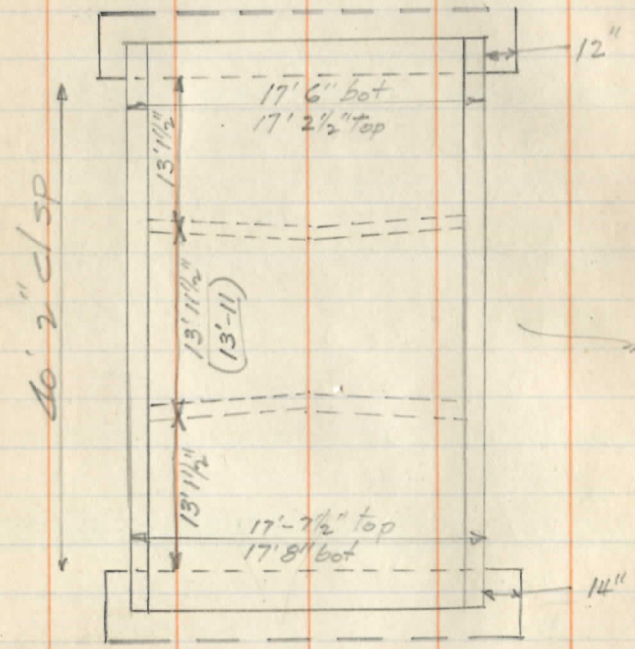
44+0

18.5

tree plantings

Cuyahoga River Bridge on BURTON-WINDSOR RD. 11-17-54

43' overall truss



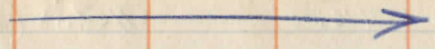
± 1 1/2" bow in each needle

17'-8" x 12" needle beams

7" stringers at ± 30" c/c

5 I's & 2 channels

See levels next pg



31

11-17-54

Levels Cuyahoga River Bridge
 on Burton-Windsor

BM	8.42	1116.00	1107.58	1106.58?
	8.35		07.65	1922 ↓
	8.44		07.56	
	8.51		07.49	06.46
	8.07		07.93	
	8.07		07.93	
	7.76		08.24	
	7.66		08.34	
	7.36		08.64	07.66
	7.28		08.72	
	7.18		08.82	
	7.23		08.77	07.74
	6.25		09.75	08.48
	5.96		10.04	
	5.76		10.24	
	7.29		08.71	07.76
	7.71		08.29	
	7.74		08.76	
BM	7.80		08.70	

1922 FB 42 pg. 31

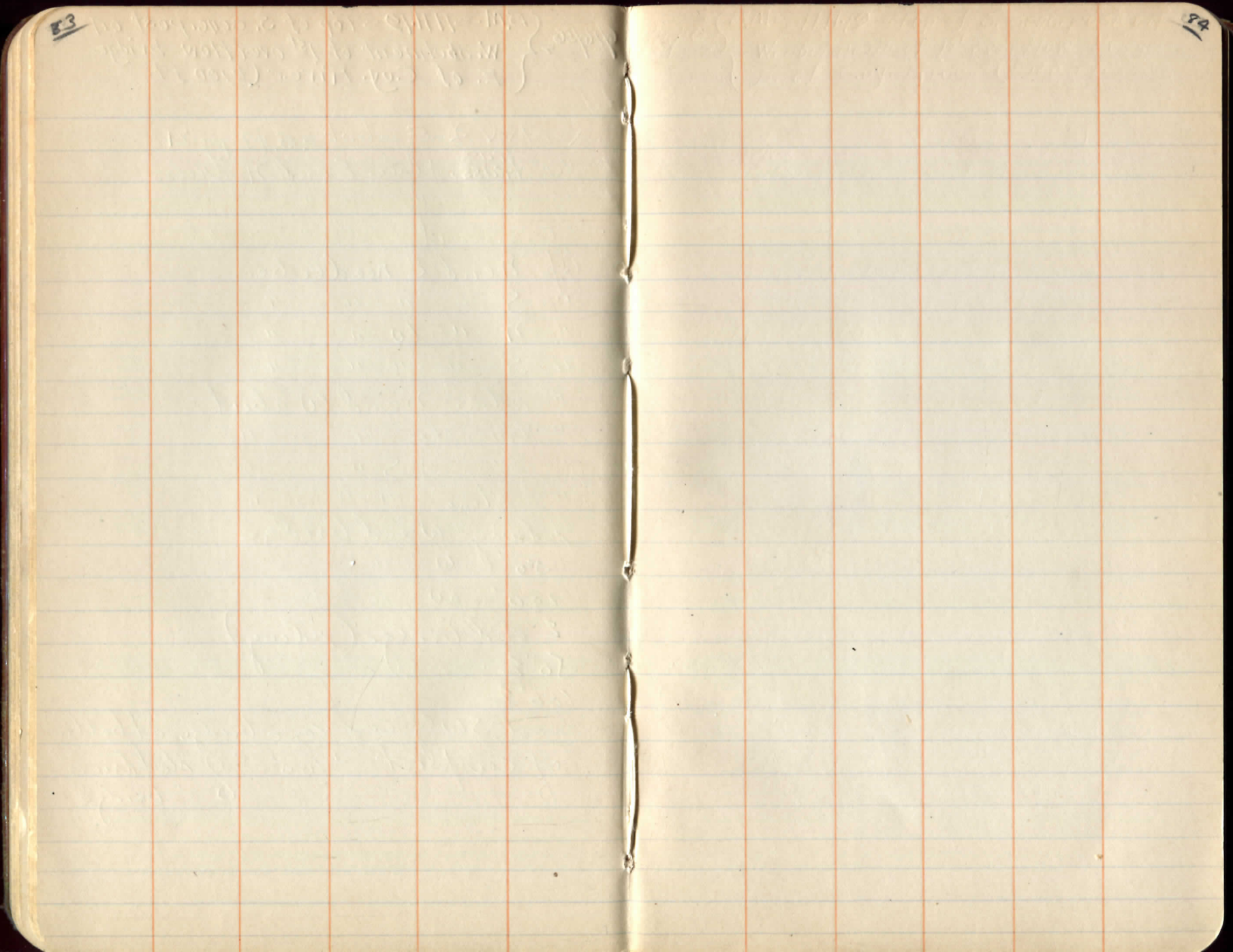
6/16/56

B.M. = 1111.19 = Top of S. conc. post on
 W. abutment of 1st overflow bridge
 E. of Cuy. River (±100 ft.)

32

Ed

- X NW & E abut F.B. 42 pg 21
- ± 3/4" ^{TRUSS} truss, plate E end N truss
- ± " " " " " S "
- Stone seat " " " "
- top N end E needle beam
- " S " " " "
- " N " W " "
- " S " " " "
- " stone N end W abut.
- " truss shoe " " "
- " " " S " " "
- " stone " " " "
- rdway W end bridge
- 50' W " " "
- 100' W " " "
- E end bridge (rdway)
- 50' E
- 100' E
- most SWly cor conc bridge at bottom
 of cor post ±100' E of steel truss
 bridge



85

86

58

59

91

92

93

94

95

96

92

93

95

96

101

102

103

104

105

106

107

108

109

110

111

112

113

114

115

116

117

118

119

120

121

122

123

129

125

126

127

128

129

130

131

132

133

134

135

136

11+67 Extend and enclose 12'
corrugated standard head
walls.

→

18+42 Change grades to slope to culvert
Extend + enclose 12" corrugated
standard headwalls

→

43+45 New floor + new top in
old structure, 100^{line} ft ftg.
Extend W. end.
Make extension 3' x 2'-6"
Use old stone masonry head-
wall on W. Relay masonry
headwall on East

Clean ~~out~~ old structure
Open ditch 50 ft. to Lt.

50+34 Relay ^{16'-0"} 12" corrugated + extend
enclose in concrete
"L" headwall on Rt.
Open 1 ft ditch 50 ft to Lt.

←

with some

61+10 Remove old top + build
new concrete top. extend
dbl. to west (Lt). Clean out.
open 1 ft ditch 50 to Lt. Use old
stone for agets.

← flow

139
68+55

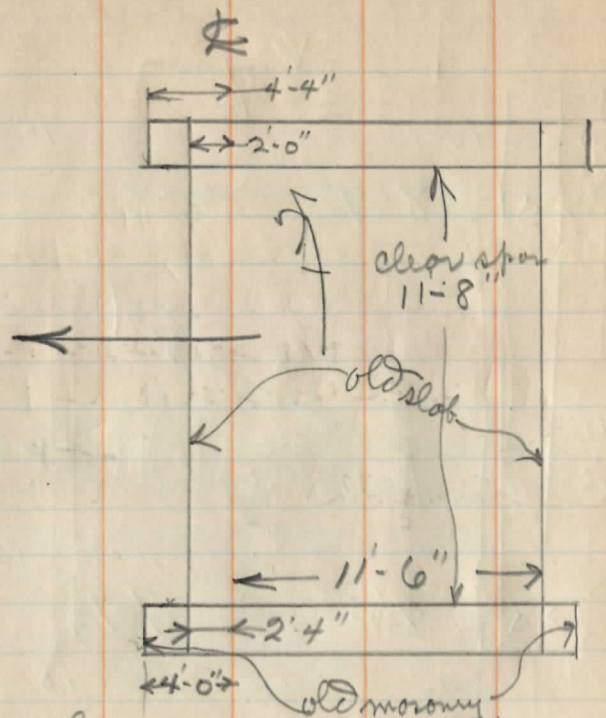
Abandon

74+28 Remove old stone culvert
Build new 18" vit enclosed,
Use old stone for masonry
headwalls.

100+27

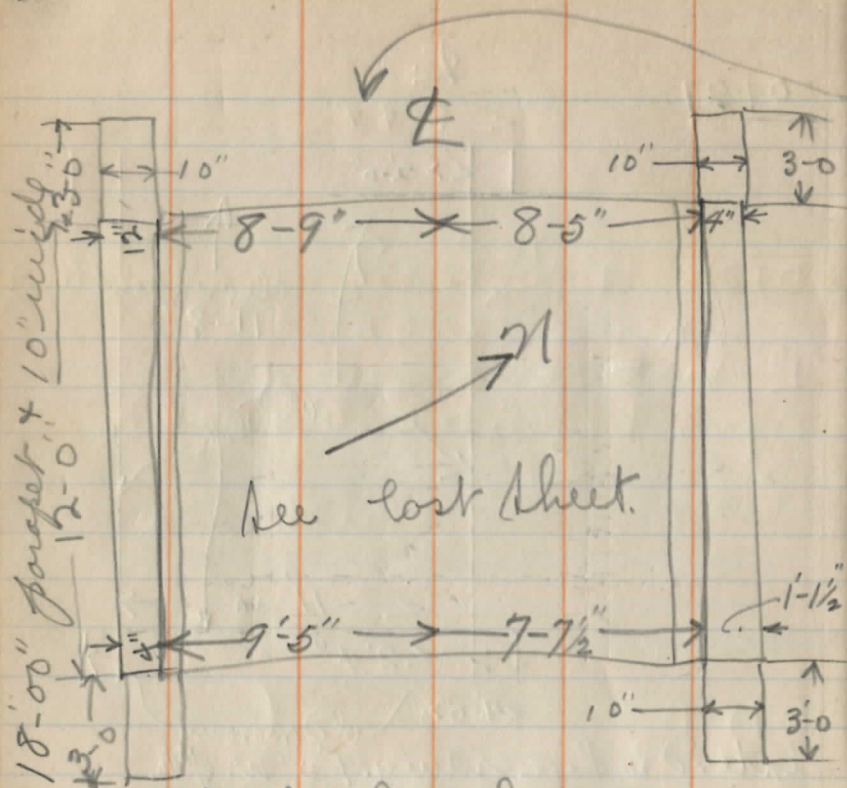
#1500 to remove & reerect rail
Standard steel for slab extension
No steel in abutments.
8'-0" under slab to bottom footings
Increase footers about 1/2' for
soft soil.
~~Extend~~ 2 1/2 x 3 1/2 angle 4'-0" long
for brace to truss

100+27



Extend to bore rdwy. 9'-0" W. of
wing walls, parallel to rdwy.
New 6' channel 14'-00" long, for lower member
of truss
114+07 Delay, extend and encase
in concrete under dirt side
road. 12" sect. C.I.P.
Standard headwalls

140



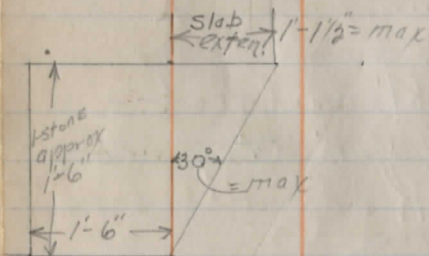
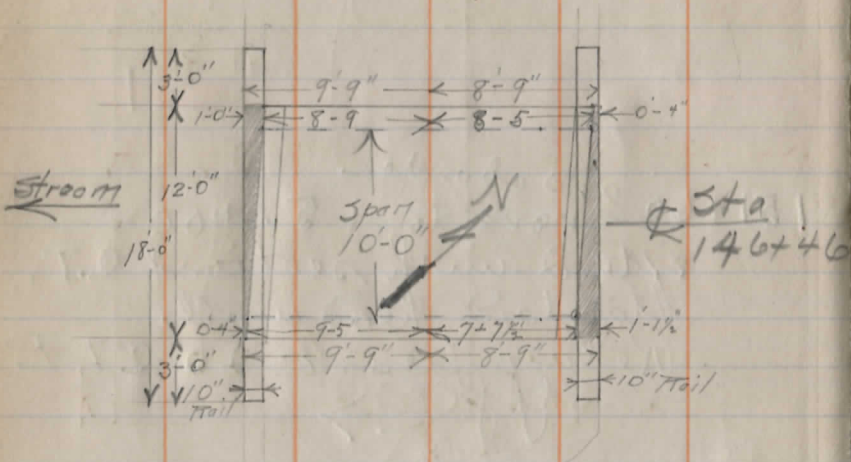
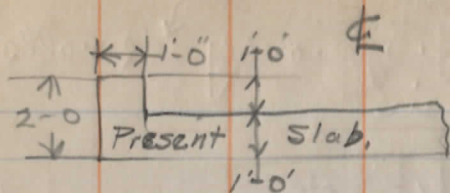
Make bracket under each corner 18" x 18" bearing on old masonry. Probably 45° rise on outside

Present
Concrete top. Masonry side walls
140+46 Repair

200 ft jointing

151+60 and abandon
move to 152+00
extend with section C.I.
standard head walls
Relay present 20' C.I. P.
Slope →

163+57 Double bbl. culvert.
250 sq. ft. jointing
other side OK
Slope →



DIRECTIONS FOR USE OF TABLES

TABLE No. 1.

Distance of slope stake from side or shoulder
 stake for any width roadway, slope 1% to 1.
 If ground is nearly level, the cut or fill at side
 stake is located by the double curve method in

let column and top row. The number in body

of table is the distance from side stake to

level estimate the difference in elevation between

the side stake and the lower target by this

amount & cut or fill. Add this amount

to cut or fill. Set up the level on the

rod at the side stake. The distance from

target. It does not make the slight adjustment

necessary.

TABLE No. 2.

To find Tangent and External for curve of
 any other degree, divide by degree of curve and
 add correction found in column of correction.

Degree of curve with a chain I may be found
 by dividing tangent (or external), opposite I by
 given tangent (or external).

The distance from a point on the tangent to
 the curve is very nearly the square of the tangent
 length divided by twice the radius.

DIRECTIONS FOR USE OF TABLES

TABLE No. 1.

Distance of slope stake from side or shoulder stake for any width roadway, slope $1\frac{1}{2}$ to 1. If ground is nearly level, the cut or fill at side stake is located by the double entry method in left column and top row. The number in body of table in same row and column gives distance from side stake to slope stake. If ground is not level estimate the difference in elevation between the side stake and slope stake, lower target by this amount if cut, elevate if fill. Add this amount to cut or fill and find distance in table. Set up rod at this point, and line of sight should cut target. If it does not make the slight adjustment necessary.

TABLE No. 9.

To find Tangent and External for curve of any other degree, divide by degree of curve and add correction found in column of corrections.

Degree of curve with a given I may be found by dividing tangent, (or external), opposite I by given tangent, (or external).

The distance from a point on the tangent to the curve is very nearly the square of the tangent length divided by twice the radius.

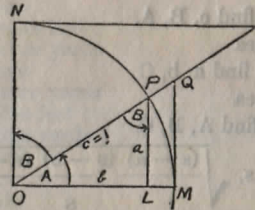


TABLE II
TRIGONOMETRIC FORMULÆ

$$\angle A = \angle MOP \quad \angle B = \angle PON = \angle OPL$$

$$R = OB = c = 1$$

$$\sin A = \frac{a}{c} = \frac{a}{1} = a = \cos B = LP$$

$$\cos A = \frac{b}{c} = \frac{b}{1} = b = \sin B = OL$$

$$\tan A = \frac{a}{b} = \frac{MQ}{OM} = \frac{MQ}{1} = MQ = \cot B = \frac{1}{MQ}$$

$$\cot A = \frac{NT}{ON} = \frac{NT}{1} = NT = \tan B = \frac{1}{NT}$$

$$\sec A = \frac{OQ}{OM} = \frac{OQ}{1} = OQ = \csc B = \frac{1}{OQ}$$

$$\csc A = \frac{OT}{ON} = \frac{OT}{1} = OT = \sec B = \frac{1}{OT}$$

$$\text{vers } A = \frac{LM}{OP} = LM = \text{covers } B \#$$

$$\text{covers } A = \frac{OP - LP}{OP} = OP - LP = \text{vers } B$$

$$\text{exsec } A = PQ = \text{coexsec } B$$

$$\text{coexsec } A = PT = \text{exsec } B$$

$$\sin \frac{1}{2} A = \sqrt{\frac{1 - \cos A}{2}} \quad \cos \frac{1}{2} A = \sqrt{\frac{1 + \cos A}{2}}$$

$$\sin 2A = 2 \sin A \cos A \quad \cos 2A = \cos^2 A - \sin^2 A$$

$$\text{Law of Lines} \quad \frac{\sin A}{a} = \frac{\sin B}{B} = \frac{\sin C}{C}$$

$$\text{Law of Cosines} \quad c^2 = a^2 + b^2 - 2ab \cos C$$

$$\text{Law of Tangents} \quad \frac{a+b}{a-b} = \frac{\tan \frac{1}{2}(A+B)}{\tan \frac{1}{2}(A-B)}$$

TABLE II—Continued
TRIGONOMETRIC FORMULAE (continued)

In any triangle:

Given a, b, C; to find c, B, A.

Use Law of Lines.

Given A, B, c; to find a, b, C.

Use Law of Lines.

Given a, b, c; to find A, B, C.

$$\text{Let } \frac{a+b+c}{2} = s, \sqrt{\frac{(s-a)(s-b)(s-c)}{s}} = r$$

$$\cos \frac{1}{2} A = \sqrt{\frac{s(s-a)}{bc}}$$

$$\tan \frac{1}{2} A = \frac{r}{s-a}$$

$$\tan \frac{1}{2} B = \frac{r}{s-b}$$

$$\tan \frac{1}{2} C = \frac{r}{s-c}$$

Area of a triangle:

$$\text{Area} = \frac{1}{2} ab \sin C$$

$$\text{Area} = \sqrt{s(s-a)(s-b)(s-c)}$$

PRISMOIDAL FORMULA.

$$\text{Vol.} = \frac{h}{6} (B+b+4M)$$

h = altitude; b, B = bases; M = midsection

TABLE III
INCHES AND FRACTIONS OF AN INCH IN DECIMALS OF A FOOT

	0	1	2	3	4	5	6	7	8	9	10	11
$\frac{1}{16}$.0052	.0885	.1719	.2552	.3385	.4219	.5052	.5885	.6719	.7552	.8385	.9219
$\frac{1}{8}$.0104	.0938	.1771	.2604	.3438	.4271	.5104	.5938	.6771	.7604	.8438	.9271
$\frac{3}{16}$.0156	.0990	.1823	.2656	.3490	.4323	.5156	.5990	.6823	.7656	.8490	.9323
$\frac{1}{4}$.0208	.1042	.1875	.2708	.3542	.4375	.5208	.6042	.6875	.7708	.8542	.9375
$\frac{5}{16}$.0260	.1094	.1927	.2760	.3594	.4427	.5260	.6094	.6927	.7760	.8594	.9427
$\frac{3}{8}$.0313	.1146	.1979	.2813	.3646	.4479	.5313	.6146	.6979	.7813	.8646	.9479
$\frac{7}{16}$.0365	.1198	.2031	.2865	.3698	.4531	.5365	.6198	.7031	.7865	.8698	.9531
$\frac{1}{2}$.0417	.1250	.2083	.2917	.3750	.4583	.5417	.6250	.7083	.7917	.8750	.9583
$\frac{9}{16}$.0469	.1302	.2135	.2969	.3803	.4635	.5469	.6302	.7135	.7969	.8802	.9635
$\frac{5}{8}$.0521	.1354	.2188	.3021	.3854	.4688	.5521	.6354	.7188	.8021	.8854	.9688
$\frac{11}{16}$.0573	.1406	.2240	.3073	.3906	.4740	.5573	.6406	.7240	.8073	.8906	.9740
$\frac{3}{4}$.0625	.1458	.2292	.3125	.3958	.4792	.5625	.6458	.7292	.8125	.8958	.9792
$\frac{7}{8}$.0677	.1510	.2344	.3177	.4010	.4844	.5677	.6510	.7344	.8177	.9010	.9844
$\frac{15}{16}$.0729	.1563	.2396	.3229	.4063	.4896	.5729	.6563	.7396	.8229	.9063	.9896
$\frac{1}{2}$.0781	.1615	.2448	.3281	.4115	.4948	.5781	.6615	.7448	.8281	.9115	.9948
$\frac{13}{16}$.0833	.1667	.2500	.3333	.4167	.5000	.5833	.6667	.7500	.8333	.9167	1.0000
1	0	1	2	3	4	5	6	7	8	9	10	11

TABLE IV
USEFUL RELATIONS.

Lineal feet	×.00019	= miles
Lineal yards	×.0006	= miles
Square inches	×.007	= square feet
Square feet	×.111	= square yards
Square yards	×.0002067	= acres
Acres	×4840	= square yards
Cubic inches	×.00058	= cubic feet
Cubic feet	×.03704	= cubic yards
Links	×.22	= yards
Links	×.66	= feet
Feet	×1.5	= links

$$360^\circ = 21600' = 1296000''$$

$$\text{Radius} = \text{arc of } 57.2957790^\circ$$

$$\text{Arc of } 1^\circ (\text{radius} = 1) = .017453292$$

$$\text{Arc of } 1' (\text{radius} = 1) = .000290888$$

$$\text{Arc of } 1'' (\text{radius} = 1) = .000004848$$

$$\pi = 3.141592654 \quad \sqrt{\frac{1}{4}} = 0.564190$$

$$\frac{\pi}{4} = 0.785398163 \quad \sqrt{\frac{6}{\pi}} = 1.240700982$$

$$\frac{\pi}{6} = 0.523598776 \quad \pi^2 = 9.869604401$$

$$\sqrt{\frac{4}{\pi}} = 1.128379167 \quad \frac{1}{\pi^2} = 0.101321184$$

$$\frac{\pi}{6} = 0.523598776 \quad \sqrt{\pi} = 1.772453851$$

$$\frac{4\pi}{3} = 4.188790205 \quad \frac{1}{\pi} = 0.3183099$$

Curvature of Earth's surface = about 0.7 feet in 1 mile

Curvature in feet = 0.667 (Dist. in miles)²

Difference between arc and chord length, 0.05 feet in 11½ miles

$$\text{Probable error of a single observation} = 0.6754 \sqrt{\frac{\sum v^2}{n-1}}$$

Error in chaining of 0.01 feet in 100 feet:

Due to—

1. Length of tape error of 0.01 feet
2. Alignment. One end 1.4 feet out of line
3. Sag of tape at centre of 0.61 feet.
4. Temperature difference of 15°
5. Difference of pull of 15 lbs.

STADIA REDUCTION FORMULAE.

$$\text{Horizontal Distance} = R - R \sin^2 a + C \cos a$$

$$\text{Vertical Distance} = R \frac{1}{2} \sin 2a + C \sin a$$

distance from Object glass to cross hairs

$$R = \text{Reading} \times \frac{\text{distance from Object glass to cross hairs}}{\text{distance between cross hairs}}$$

C = distance from Object glass to cross hairs + distance from Object glass to center of instrument.

a = angle of elevation for mid Reading

TABLE VI (continued)
SINES, COSINES, TANGENTS, COTANGENTS (continued)

deg.	sin 0'	tan 0'	sin 10'	tan 10'	sin 20'	tan 20'	sin 30'	tan 30'	sin 40'	tan 40'	sin 50'	tan 50'	deg.
46	7193	1.0355	7214	1.0416	7234	1.0477	7254	1.0533	7274	1.0599	7294	1.0661	43
47	314	.0724	333	.0786	353	.0850	373	.0913	392	.0977	412	1.041	42
48	431	.1106	451	.1171	470	.1237	490	.1303	509	.1369	528	.1436	41
49	547	.1504	566	.1571	585	.1640	604	.1708	623	.1778	642	.1847	40
50	660	1.1918	7679	1.1988	7698	1.2059	7716	1.2131	7735	1.2203	7753	1.2276	39
51	771	.2349	790	.2423	808	.2497	826	.2572	844	.2647	862	.2723	38
52	880	.2799	898	.2876	916	.2954	934	.3032	951	.3111	969	.3190	37
53	986	.3270	8004	.3351	8021	.3452	8039	.3514	8056	.3597	8073	.3680	36
54	8090	.3764	107	.3848	124	.3934	141	.4019	158	.4106	175	.4193	35
55	192	.4281	208	.4370	225	.4460	241	.4550	258	.4641	274	.4733	34
56	290	.4826	307	.4919	323	.5013	339	.5108	355	.5204	371	.5301	33
57	387	.5399	403	.5497	418	.5597	434	.5697	450	.5798	465	.5900	32
58	480	.6003	496	.6107	511	.6212	526	.6319	542	.6426	557	.6534	31
59	572	.6643	587	.6753	601	.6864	616	.6977	631	.7090	646	.7205	30
60	660	1.7321	8675	1.7437	8689	1.7556	8704	1.7675	8718	1.7797	8732	1.7917	29
61	746	.8040	760	.8165	774	.8291	788	.8418	802	.8546	816	.8676	28
62	829	.8807	843	.8940	857	.9074	870	.9210	884	.9347	897	.9486	27
63	910	.9626	923	.9768	936	.9912	949	2.0057	962	2.0204	975	2.0353	26
64	988	2.0503	9001	2.0655	9013	2.0809	9026	.0965	9038	1.123	9051	1.283	25
65	9063	.1445	075	.1609	088	.1775	100	.1943	112	.2113	124	.2286	24
66	135	.2460	147	.2637	159	.2817	171	.2998	182	.3183	194	.3369	23
67	205	.3559	216	.3750	228	.3945	239	.4142	250	.4342	261	.4545	22
68	272	.4751	283	.4960	293	.5172	304	.5386	315	.5605	325	.5826	21
69	336	.6051	346	.6279	356	.6511	367	.6746	377	.6985	387	.7228	20
70	397	2.7475	9407	2.7725	9417	2.7980	9426	2.8239	9436	2.8502	9446	2.8770	19
71	455	.9042	465	.9319	474	.9600	483	.9887	492	3.0178	502	3.0475	18
72	511	3.0777	520	3.1084	528	3.1397	537	3.1716	546	.2041	555	.2371	17
73	568	.2709	572	.3052	580	.3402	588	.3759	596	.4124	605	.4495	16
74	613	.4874	621	.5261	628	.5656	636	.6059	644	.6470	652	.6891	15
75	659	.7321	667	.7760	674	.8208	681	.8657	689	.9136	696	.9617	14
76	703	4.0108	710	4.0611	717	4.1126	724	4.1653	730	4.2193	737	4.2747	13
77	744	.3315	750	.3897	757	.4494	763	.5107	769	.5736	775	.6382	12
78	781	.7046	787	.7729	793	.8430	799	.9152	805	.9894	811	5.0658	11
79	816	.1446	822	.5.2257	827	5.3093	833	5.3955	838	5.4845	843	.5764	10
80	9848	5.6713	9858	5.7694	9858	5.8708	9863	5.9758	9868	6.0844	9872	6.1970	9
81	877	6.3138	881	6.4348	886	6.5606	890	6.6912	894	.8269	899	.9682	8
82	903	7.1154	907	7.2687	911	7.4287	914	7.5958	918	7.7704	922	7.9530	7
83	925	8.1443	929	8.3450	932	8.5555	936	8.7769	939	9.0098	942	9.2553	6
84	945	9.5144	948	9.7882	951	10.078	954	10.385	957	10.711	959	11.059	5
85	962	11.430	964	11.826	967	12.250	969	12.706	971	13.197	974	13.727	4
86	976	14.300	978	14.924	980	15.605	981	16.350	983	17.169	985	18.075	3
87	986	19.081	988	20.206	989	21.470	990	22.903	992	24.542	993	26.432	2
88	994	28.636	995	31.242	996	34.368	997	38.189	997	42.964	998	49.104	1
89	998	57.290	999	68.750	999	85.940	999	114.58	1.000	171.88	1.000	343.77	0
deg.	60'	60'	50'	50'	40'	40'	30'	30'	20'	30'	10'	10'	deg.
	cos	cot	cos	cot	cos	cot	cos	cot	cos	cot	cos	cot	

TABLE VII
RODS IN FEET AND INCHES

Rods	Feet Inches	Rods	Feet Inches	Rods	Feet Inches	Rods	Feet Inches	Rods	Feet Inches
1	16-6	21	346-6	41	676-6	61	1006-6	81	1336-6
2	33-0	22	363-0	42	693-0	62	1023-0	82	1353-0
3	49-6	23	379-6	43	709-6	63	1039-6	83	1369-6
4	66-0	24	396-0	44	726-0	64	1056-0	84	1386-0
5	82-6	25	412-6	45	742-6	65	1072-6	85	1402-6
6	99-0	26	429-0	46	759-0	66	1089-0	86	1419-0
7	115-6	27	445-6	47	775-6	67	1105-6	87	1435-6
8	132-0	28	462-0	48	792-0	68	1122-0	88	1452-0
9	148-6	29	478-6	49	808-6	69	1138-6	89	1468-6
10	165-0	30	495-0	50	825-0	70	1155-0	90	1485-0
11	181-6	31	511-6	51	841-6	71	1171-6	91	1501-6
12	198-0	32	528-0	52	858-0	72	1188-0	92	1518-0
13	214-6	33	544-6	53	874-6	73	1204-6	93	1534-6
14	231-0	34	561-0	54	891-0	74	1221-0	94	1551-0
15	247-6	35	577-6	55	907-6	75	1237-6	95	1567-6
16	264-0	36	594-0	56	924-0	76	1254-0	96	1584-0
17	280-6	37	610-6	57	940-6	77	1270-6	97	1600-6
18	297-0	38	627-0	58	957-0	78	1287-0	98	1617-0
19	313-6	39	643-6	59	973-6	79	1303-6	99	1633-6
20	330-0	40	660-0	60	990-0	80	1320-0	100	1650-0

TABLE VIII
LINKS IN FEET AND INCHES

Links	Feet Inches	Links	Feet Inches	Links	Feet Inches	Links	Feet Inches	Links	Feet Inches	Links	Feet Inches
1	0-7.92	18	11-10.56	35	23-1.20	52	34-3.84	69	45-6.48	86	56-9.12
2	1-3.84	19	12-6.48	36	23-9.12	53	34-11.76	70	46-2.40	87	57-5.04
3	1-11.76	20	13-2.40	37	24-5.04	54	35-7.68	71	46-10.32	88	58-0.96
4	2-7.68	21	13-10.32	38	25-0.96	55	36-3.60	72	47-6.24	89	58-8.88
5	3-3.60	22	14-6.24	39	25-8.88	56	36-11.52	73	48-2.16	90	59-4.80
6	3-11.52	23	15-2.16	40	26-4.80	57	37-7.44	74	48-10.08	91	60-0.72
7	4-7.44	24	15-10.08	41	27-0.72	58	38-3.36	75	49-6.00	92	60-8.64
8	5-3.36	25	16-6.00	42	27-8.64	59	38-11.28	76	50-1.92	93	61-4.56
9	5-11.28	26	17-1.92	43	28-4.56	60	39-7.20	77	50-9.84	94	62-0.48
10	6-7.20	27	17-9.84	44	29-0.48	61	40-3.12	78	51-5.76	95	62-8.40
11	7-3.12	28	18-5.76	45	29-8.40	62	40-11.04	79	52-1.68	96	63-4.32
12	7-11.04	29	19-1.68	46	30-4.32	63	41-6.96	80	52-9.60	97	64-0.24
13	8-6.96	30	19-9.60	47	31-0.24	64	42-2.88	81	53-5.52	98	64-8.16
14	9-2.88	31	20-5.52	48	31-8.16	65	42-10.80	82	54-1.44	99	65-4.08
15	9-10.80	32	21-1.44	49	32-4.08	66	43-6.72	83	54-9.36	100	66-0.00
16	10-6.72	33	21-9.36	50	33-0.00	67	44-2.64	84	55-5.28	101	66-7.92
17	11-2.64	34	22-5.28	51	33-7.92	68	44-10.56	85	56-1.20	102	67-3.84

TABLE IX. TANGENTS AND EXTERNALS TO A 1° CURVE

I	T	E	I=10°	I	T	E	I=20°	I	T	E	I=30°
1°	50.00	.218	+	11°	551.70	26.500	+	21°	1061.9	97.577	+
10°	58.34	.297	5° C.	10°	560.11	27.313	5° C.	10°	1070.6	99.155	5° C.
20°	66.67	.388		20°	568.53	28.137		20°	1079.2	100.75	
30°	75.01	.491		30°	576.95	28.974		30°	1087.8	102.35	
40°	83.34	.606		40°	585.36	29.824		40°	1096.4	103.97	
50°	91.68	.733		50°	593.79	30.686		50°	1105.1	105.60	
2°	100.01	.873	.001	12°	602.21	31.561	.006	22°	1113.7	107.24	.013
10°	108.35	1.024		10°	610.64	32.447		10°	1122.4	108.90	
20°	116.68	1.188		20°	619.07	33.347		20°	1131.0	110.57	
30°	125.02	1.364		30°	627.50	34.259		30°	1139.7	112.25	
40°	133.36	1.552		40°	635.93	35.183		40°	1148.4	113.95	
50°	141.70	1.752		50°	644.37	36.120		50°	1157.0	115.66	
3°	150.04	1.964	10° C.	13°	652.81	37.070	10° C.	23°	1165.7	117.38	10° C.
10°	158.38	2.188	T	10°	661.25	38.031	T	10°	1174.4	119.12	T
20°	166.72	2.425	.06	20°	669.70	39.006	.13	20°	1183.1	120.87	.19
30°	175.06	2.674		30°	678.15	39.993		30°	1191.8	122.63	
40°	183.40	2.934	E	40°	686.60	40.992	E	40°	1200.5	124.41	E
50°	191.74	3.207	.003	50°	695.06	42.004	.011	50°	1209.2	126.20	.025
4°	200.08	3.492		14°	703.51	43.029		24°	1217.9	128.00	
10°	208.43	3.790		10°	711.97	44.066		10°	1226.6	129.82	
20°	216.77	4.099		20°	720.44	45.116		20°	1235.3	131.65	
30°	225.12	4.421		30°	728.90	46.178		30°	1244.0	133.50	
40°	233.47	4.755		40°	737.37	47.253		40°	1252.8	135.35	
50°	241.81	5.100		50°	745.85	48.341		50°	1261.5	137.23	
5°	250.16	5.459	T	15°	754.32	49.441	T	25°	1270.2	139.11	T
10°	258.51	5.829	.09	10°	762.80	50.554	.19	10°	1279.0	141.01	.29
20°	266.86	6.211	E	20°	771.29	51.679	E	20°	1287.7	142.93	E
30°	275.21	6.606		30°	779.77	52.818		30°	1296.5	144.85	
40°	283.57	7.013	.004	40°	788.26	53.969	.017	40°	1305.3	146.79	.038
50°	291.92	7.432		50°	796.75	55.132		50°	1314.0	148.75	
6°	300.28	7.863		16°	805.25	56.309		26°	1322.8	150.71	
10°	308.64	8.307		10°	813.75	57.498		10°	1331.6	152.69	
20°	316.99	8.762		20°	822.25	58.699		20°	1340.4	154.69	
30°	325.35	9.230		30°	830.76	59.914		30°	1349.2	156.70	
40°	333.71	9.710		40°	839.27	61.141		40°	1358.0	158.72	
50°	342.08	10.202		50°	847.78	62.381		50°	1366.8	160.76	
7°	350.44	10.707	T	17°	856.30	63.634	T	27°	1375.6	162.81	T
10°	358.81	11.224	E	10°	864.82	64.900	E	10°	1384.4	164.86	E
20°	367.17	11.753	.006	20°	873.35	66.178	.022	20°	1393.2	166.95	.051
30°	375.54	12.294		30°	881.88	67.470		30°	1402.0	169.04	
40°	383.91	12.847		40°	890.41	68.774		40°	1410.9	171.15	
50°	392.28	13.413		50°	898.95	70.091		50°	1419.7	173.27	
8°	400.66	13.991		18°	907.49	71.421		28°	1428.6	175.41	
10°	409.03	14.582		10°	916.03	72.764		10°	1437.4	177.55	
20°	417.41	15.184		20°	924.58	74.119		20°	1446.3	179.72	
30°	425.79	15.799		30°	933.13	75.488		30°	1455.1	181.89	
40°	434.17	16.426	.16	40°	941.69	76.869	.32	40°	1464.0	184.08	.49
50°	442.55	17.065	E	50°	950.25	78.264	E	50°	1472.9	186.29	E
9°	450.93	17.717	.007	19°	958.81	79.671	.028	29°	1481.8	188.51	.065
10°	459.32	18.381		10°	967.38	81.092		10°	1490.7	190.74	
20°	467.71	19.058		20°	975.96	82.525		20°	1499.6	192.99	
30°	476.10	19.746		30°	984.53	83.972		30°	1508.5	195.25	
40°	484.49	20.447		40°	993.12	85.431		40°	1517.4	197.53	
50°	492.88	21.161		50°	1001.7	86.904		50°	1526.3	199.82	
10°	501.28	21.887		20°	1010.3	88.389		30°	1535.3	202.12	
10°	509.68	22.624	T	10°	1018.9	89.888	T	10°	1544.2	204.44	T
20°	518.08	23.375	.19	20°	1027.5	91.399	.39	20°	1553.1	206.77	.59
30°	526.48	24.138	E	30°	1036.1	92.924	E	30°	1562.1	209.12	E
40°	534.89	24.913		40°	1044.7	94.462		40°	1571.0	211.48	
50°	543.29	25.700	.008	50°	1053.3	96.013	.034	50°	1580.0	213.86	.078

T = R tan ½ I

E = R exsec ½ I

TABLE IX. TANGENTS AND EXTERNALS TO A 1° CURVE

I	T	E	I=40°	I	T	E	I=50°	I	T	E	I=60°
31°	1589.0	216.3	+	41°	2142.2	387.4	+	51°	2732.9	618.4	+
10°	1598.0	218.7	5° C.	10°	2151.7	390.7	5° C.	10°	2743.1	622.8	5° C.
20°	1606.9	221.1		20°	2161.2	394.1		20°	2753.4	627.2	
30°	1615.9	223.5	T	30°	2170.8	397.4	T	30°	2763.7	631.7	T
40°	1624.9	226.0	.13	40°	2180.3	400.8	.17	40°	2773.9	636.2	.21
50°	1633.9	228.4	E	50°	2189.9	404.2	E	50°	2784.2	640.7	E
32°	1643.0	230.9	.023	42°	2199.4	407.6	.037	52°	2794.6	645.2	.056
10°	1652.0	233.4		10°	2209.0	411.1		10°	2804.9	649.7	
20°	1661.0	235.9		20°	2218.6	414.5		20°	2815.2	654.3	
30°	1670.0	238.4		30°	2228.1	418.0		30°	2825.6	658.8	
40°	1679.1	241.0		40°	2237.7	421.4		40°	2835.9	663.4	
50°	1688.1	243.5		50°	2247.3	425.0		50°	2846.3	668.0	
33°	1697.2	246.1	10° C.	43°	2257.0	428.5	10° C.	53°	2856.7	672.7	10° C.
10°	1706.3	248.7	T	10°	2266.6	432.0	T	10°	2867.1	677.3	T
20°	1715.3	251.3	.26	20°	2276.2	435.6	.34	20°	2877.5	682.0	.42
30°	1724.4	253.9	E	30°	2285.9	439.2	E	30°	2888.0	686.7	E
40°	1733.5	256.5	.046	40°	2295.6	442.8	.075	40°	2898.4	691.4	.112
50°	1742.6	259.1		50°	2305.2	446.4		50°	2908.9	696.1	
34°	1751.7	261.8		44°	2314.9	450.0		54°	2919.4	700.9	
10°	1760.8	264.5		10°	2324.6	453.6		10°	2929.9	705.7	
20°	1770.0	267.2		20°	2334.3	457.3		20°	2940.4	710.5	
30°	1779.1	269.9		30°	2344.1	461.0		30°	2951.0	715.3	
40°	1788.2	272.6		40°	2353.8	464.6		40°	2961.5	720.1	
50°	1797.4	275.3		50°	2363.5	468.4		50°	2972.1	725.0	
35°	1806.6	278.1	T	45°	2373.3	472.1	T	55°	2982.7	729.9	T
10°	1815.7	280.8	.40	10°	2383.1	475.8	.51	10°	2993.3	734.8	.63
20°	1824.9	283.6	E	20°	2392.8	479.6	E	20°	3003.9	739.7	E
30°	1834.1	286.4	.070	30°	2402.6	483.4	.116	30°	3014.5	744.6	.168
40°	1843.3	289.2		40°	2412.4	487.2		40°	3025.2	749.6	
50°	1852.5	292.0		50°	2422.3	491.0		50°	3035.8	754.6	
36°	1861.7	294.9		46°	2432.1	494.8		56°	3046.5	759.6	
10°	1870.9	297.7		10°	2441.9	498.7		10°	3057.2	764.6	
20°	1880.1	300.6		20°	2451.8	502.5		20°	3067.9	769.7	
30°	1889.4	303.5		30°	2461.7	506.4		30°	3078.7	774.7	
40°	1898.6	306.4		40°	2471.5	510.3		40°	3089.4	779.8	
50°	1907.9	309.3		50°	2481.4	514.3		50°	3100.2	784.9	
37°	1917.1	312.2	E	47°	2491.3	518.2	E	57°	3110.9	790.1	E
10°	1926.4	315.2	.093	10°	2501.2	522.2	.151	10°	3121.7	795.2	.225
20°	1935.7	318.1		20°	2511.2	526.1		20°	3132.6	800.4	
30°	1945.0	321.1		30°	2521.1	530.1		30°	3143.4	805.6	
40°	1954.3	324.1		40°	2531.1	534.2		40°	3154.2	810.9	
50°	1963.6	327.1		50°	2541.0	538.2		50°	3165.1	816.1	
38°	1972.9	330.2		48°	2551.0	542.2		58°	3176.0	821.4	
10°	1982.2	333.2		10°	2561.0	546.3		10°	3186.9	826.7	
20°	1991.5	336.3		20°	2571.0	550.4		20°	3197.8	832.0	
30°	2000.9	339.3		30°	2581.0	554.5		30°	3208.8	837.3	
40°	2010.2	342.4	.67	40°	2591.0	558.6	.85	40°	3219.7	842.7	1.05
50°	2019.6	345.5	E	50°	2601.1	562.8	E	50°	3230.7	848.1	E
39°	2029.0	348.6	.117	49°	2611.2	566.9	.189	59°	3241.7	853.5	.283
10°	2038.4	351.8		10°	2621.2						

TABLE IX. TANGENTS AND EXTERNALS TO A 1° CURVE

I	T	E	I=70°	I	T	E	I=80°	I	T	E	I=90°
61°	3375.0	920.2	+	71°	4086.9	1308.2	+	81°	4893.6	1805.3	+
10'	3386.3	925.9		10'	4099.5	1315.6		10'	4908.0	1814.7	
20'	3397.5	931.6	5° C.	20'	4112.1	1322.9	5° C.	20'	4922.5	1824.1	5° C.
30'	3408.8	937.3	T	30'	4124.8	1330.3	T	30'	4937.0	1833.6	T
40'	3420.1	943.1	.25	40'	4137.4	1337.7	.30	40'	4951.5	1843.1	.36
50'	3431.4	948.9	E	50'	4150.1	1345.1	E	50'	4966.1	1852.6	E
62°	3442.7	954.8	.080	72°	4162.8	1352.6	.110	82°	4980.7	1862.2	.149
10'	3454.1	960.6		10'	4175.6	1360.1		10'	4995.4	1871.8	
20'	3465.4	966.5		20'	4188.5	1367.6		20'	5010.0	1881.5	
30'	3476.8	972.4		30'	4201.2	1375.2		30'	5024.8	1891.2	
40'	3488.3	978.3		40'	4214.0	1382.8		40'	5039.5	1900.9	
50'	3499.7	984.3		50'	4226.8	1390.4		50'	5054.3	1910.7	
63°	3511.1	990.2	10° C.	73°	4239.7	1398.0	10° C.	83°	5069.2	1920.5	10° C.
10'	3522.6	996.2	T	10'	4252.6	1405.7	T	10'	5084.0	1930.4	T
20'	3534.1	1002.3	.51	20'	4265.6	1413.5	.61	20'	5099.0	1940.3	.72
30'	3545.6	1008.3	E	30'	4278.5	1421.2	E	30'	5113.9	1950.3	E
40'	3557.2	1014.4	.159	40'	4291.5	1429.0	.220	40'	5128.9	1960.2	.299
50'	3568.7	1020.5		50'	4304.6	1436.8		50'	5143.9	1970.3	
64°	3580.3	1026.6		74°	4317.6	1444.6		84°	5159.0	1980.4	
10'	3591.9	1032.8		10'	4330.7	1452.5		10'	5174.1	1990.5	
20'	3603.5	1039.0		20'	4343.8	1460.4		20'	5189.3	2000.6	
30'	3615.1	1045.2		30'	4356.9	1468.4		30'	5204.4	2010.8	
40'	3626.8	1051.4		40'	4370.1	1476.4		40'	5219.7	2021.1	
50'	3638.5	1057.7	15° C.	50'	4383.3	1484.4	15° C.	50'	5234.9	2031.4	15° C.
65°	3650.2	1063.9	T	75°	4396.5	1492.4	T	85°	5250.3	2041.7	T
10'	3661.9	1070.2	.76	10'	4409.8	1500.5	.91	10'	5265.6	2052.1	1.09
20'	3673.7	1076.6	E	20'	4423.1	1508.6	E	20'	5281.0	2062.5	E
30'	3685.4	1082.9	.240	30'	4436.4	1516.7	.332	30'	5296.4	2073.0	.450
40'	3697.2	1089.3		40'	4449.7	1524.9		40'	5311.9	2083.5	
50'	3709.0	1095.7		50'	4463.1	1533.1		50'	5327.4	2094.1	
66°	3720.9	1102.2		76°	4476.5	1541.4		86°	5343.0	2104.7	
10'	3732.7	1108.6		10'	4489.9	1549.7		10'	5358.6	2115.3	
20'	3744.6	1115.1		20'	4503.4	1558.0		20'	5374.2	2126.0	
30'	3756.5	1121.7		30'	4516.9	1566.3		30'	5389.9	2136.7	
40'	3768.5	1128.2	20° C.	40'	4530.4	1574.7	20° C.	40'	5405.6	2147.5	20° C.
50'	3780.4	1134.8	T	50'	4544.0	1583.1	T	50'	5421.4	2158.4	T
67°	3792.4	1141.4	E	77°	4557.6	1591.6	E	87°	5437.2	2169.2	E
10'	3804.4	1148.0	.321	10'	4571.2	1600.1	.445	10'	5453.1	2180.2	.603
20'	3816.4	1154.7		20'	4584.8	1608.6		20'	5469.0	2191.1	
30'	3828.4	1161.3		30'	4598.5	1617.1		30'	5484.9	2202.2	
40'	3840.5	1168.1		40'	4612.2	1625.7		40'	5500.9	2213.2	
50'	3852.6	1174.8	1.02	50'	4626.0	1634.4	1.22	50'	5517.0	2224.3	1.45
68°	3864.7	1181.6	E	78°	4639.8	1643.0	E	88°	5533.1	2235.5	E
10'	3876.8	1188.4	.25° C.	10'	4653.6	1651.7	.25° C.	10'	5549.2	2246.7	.25° C.
20'	3889.0	1195.2	T	20'	4667.4	1660.5	T	20'	5565.4	2258.0	T
30'	3901.2	1202.0	1.28	30'	4681.3	1669.2	1.53	30'	5581.6	2269.3	1.83
40'	3913.4	1208.9	E	40'	4695.2	1678.1	E	40'	5597.8	2280.6	E
50'	3925.6	1215.8	.403	50'	4709.2	1686.9	.558	50'	5614.2	2292.0	.756
69°	3937.9	1222.7		79°	4723.2	1695.8		89°	5630.5	2303.5	
10'	3950.2	1229.7		10'	4737.2	1704.7		10'	5646.9	2315.0	
20'	3962.5	1236.7		20'	4751.2	1713.7		20'	5663.4	2326.6	
30'	3974.8	1243.7		30'	4765.3	1722.7		30'	5679.9	2338.2	
40'	3987.2	1250.8		40'	4779.4	1731.7		40'	5696.4	2349.8	
50'	3999.5	1257.9	30° C.	50'	4793.6	1740.8	30° C.	50'	5713.0	2361.5	30° C.
70°	4011.9	1265.0	T	80°	4807.7	1749.9	T	90°	5729.7	2373.3	T
10'	4024.4	1272.1	.154	10'	4822.0	1759.0	.184	10'	5746.3	2385.1	.220
20'	4036.8	1279.3	E	20'	4836.2	1768.2	E	20'	5763.1	2397.0	E
30'	4049.3	1286.5	.485	30'	4850.5	1777.4	.671	30'	5779.9	2408.9	.910
40'	4061.8	1293.6		40'	4864.8	1786.7		40'	5796.7	2420.9	
50'	4074.4	1300.9		50'	4879.2	1796.0		50'	5813.6	2432.9	

T = R tan 1/2 I E = R exsec 1/2 I

TABLE IX. TANGENTS AND EXTERNALS TO A 1° CURVE

I	T	E	I=100°	I	T	E	I=110°	I	T	E	I=120°
91°	5830.5	2444.9	+	101°	6950.6	3278.1	+	111°	8336.7	4386.1	+
10'	5847.5	2457.1		10'	6971.3	3294.1		10'	8362.7	4407.6	
20'	5864.0	2469.3	5° C.	20'	6992.0	3310.1	5° C.	20'	8388.9	4429.2	5° C.
30'	5881.7	2481.5	T	30'	7012.7	3326.1	T	30'	8415.1	4450.9	T
40'	5898.8	2493.8	.43	40'	7033.6	3342.3	.51	40'	8441.5	4472.7	.62
50'	5916.0	2506.1	E	50'	7054.5	3358.5	E	50'	8468.0	4494.6	E
92°	5933.2	2518.5	.200	102°	7075.5	3374.9	.268	112°	8494.6	4516.6	.360
10'	5950.5	2531.0		10'	7096.6	3391.2		10'	8521.3	4538.8	
20'	5967.9	2543.5		20'	7117.8	3407.7		20'	8548.1	4561.1	
30'	5985.3	2556.0		30'	7139.0	3424.3		30'	8575.0	4583.4	
40'	6002.7	2568.6		40'	7160.3	3440.9		40'	8602.1	4606.0	
50'	6020.2	2581.3		50'	7181.7	3457.6		50'	8629.3	4628.6	
93°	6037.8	2594.0	10° C.	103°	7203.2	3474.4	10° C.	113°	8656.6	4651.3	10° C.
10'	6055.4	2606.8	T	10'	7224.7	3491.3	T	10'	8684.0	4674.2	T
20'	6073.1	2619.7	.86	20'	7246.3	3508.2	.103	20'	8711.5	4697.2	1.25
30'	6090.8	2632.6	E	30'	7268.0	3525.2	F	30'	8739.2	4720.3	E
40'	6108.6	2645.5	.419	40'	7289.8	3542.4	.536	40'	8767.0	4743.6	.721
50'	6126.4	2658.5		50'	7311.7	3559.6		50'	8794.9	4766.9	
94°	6144.3	2671.6		104°	7333.6	3576.8		114°	8822.9	4790.4	
10'	6162.2	2684.7		10'	7355.6	3594.2		10'	8851.0	4814.1	
20'	6180.2	2697.9		20'	7377.8	3611.7		20'	8879.3	4837.8	
30'	6198.3	2711.2		30'	7399.9	3629.2		30'	8907.7	4861.7	
40'	6216.4	2724.5		40'	7422.2	3646.8		40'	8936.3	4885.7	
50'	6234.6	2737.9	15° C.	50'	7444.6	3664.5	15° C.	50'	8965.0	4909.9	15° C.
95°	6252.8	2751.3	T	105°	7467.0	3682.3	T	115°	8993.8	4934.1	T
10'	6271.1	2764.8	1.30	10'	7489.6	3700.2	1.56	10'	9022.7	4958.6	1.93
20'	6289.4	2778.3	E	20'	7512.2	3718.2	E	20'	9051.7	4983.1	E
30'	6307.9	2792.0	.604	30'	7534.9	3736.2	.806	30'	9080.9	5007.8	1.09
40'	6326.3	2805.6		40'	7557.7	3754.4		40'	9110.3	5032.6	
50'	6344.8	2819.4		50'	7580.5	3772.6		50'	9139.8	5057.6	
96°	6363.4	2833.2		106°	7603.5	3791.0		116°	9169.4	5082.7	
10'	6382.1	2847.0		10'	7626.6	3809.4		10'	9199.1	5107.9	
20'	6400.8	2861.0		20'	7649.7	3827.9		20'	9229.0	5133.3	
30'	6419.5	2875.0		30'	7672.9	3846.5		30'	9259.0	5158.8	
40'	6438.4	2889.0	20° C.	40'	7696.3	3865.2	20° C.	40'	9289.2	5184.5	20° C.
50'	6457.3	2903.1	T	50'	7719.7	3884.0	T	50'	9319.5	5210.3	T
97°	6476.2	2917.3	E	107°	7743.2	3902.9	E	117°	9349.9	5236.2	E
10'	6495.2	2931.6	.809	10'	7766.8	3921.9	1.08	10'	9380.5	5262.3	1.46
20'	6514.3	2945.9		20'	7790.5	3940.9		20'	9411.3	5288.6	
30'	6533.4	2960.3		30'	7814.3	3960.1		30'	9442.2	5315.0	
40'	6552.6	2974.7		40'	7838.1	3979.4		40'	9473.2	5341.5	
50'	6571.9	2989.2		50'	7862.1	3998.7		50'	9504.4	5368.2	
98°	6591.2	3003.8		108°	7886.2	4018.2		118°	9535.7	5395.1	
10'	6610.6	3018.4		10'	7910.4	4037.8		10'	9567.2	5422.1	
20'	6630.1	3033.1	25° C.	20'	7934.6	4057.4	25° C.	20'	9598.9	5449.2	25° C.
30'	6649.6	3047.9	T	30'	7959.0	4077.2	T	30'	9630.7	5476.5	T
40'	6669.2	3062.8	2.18	40'	7983.5	4097.1	2.61	40'	9662.6	5504	

TABLE X.
MIDDLE ORDINATES OF RAILS
Length of Rail (feet)

C	R	30	28	26	24	22	20	C	R	30	28	26	24	22	20
o /	Feet	Inch	Inch	Inch	Inch	Inch	Inch	o	Feet	Inch	Inch	Inch	Inch	Inch	Inch
0-20	17189	.08	.07	.06	.05	.04	.03	8	716.8	1.88	1.64	1.42	1.20	1.01	.84
0-40	8594	.16	.14	.12	.10	.08	.07	9	637.3	2.12	1.84	1.60	1.35	1.14	.94
1-0	5730	.24	.20	.18	.15	.13	.10	10	573.7	2.36	2.05	1.78	1.50	1.27	1.04
1-20	4297	.31	.27	.23	.20	.17	.13	11	521.7	2.59	2.26	1.95	1.65	1.39	1.15
1-40	3438	.39	.34	.29	.25	.21	.17	12	478.3	3.83	2.47	2.15	1.81	1.54	1.26
2-0	2865	.47	.41	.35	.30	.25	.20	13	441.7	3.05	2.66	2.30	1.96	1.66	1.36
2-20	2456	.55	.48	.41	.35	.29	.23	14	410.3	3.30	2.87	2.48	2.10	1.78	1.46
2-40	2149	.63	.55	.47	.40	.33	.27	15	383.1	3.54	3.08	2.68	2.26	1.91	1.57
3-0	1910	.71	.62	.53	.45	.38	.31	16	359.3	3.76	3.28	2.83	2.40	2.04	1.67
3-20	1719	.78	.68	.59	.50	.42	.35	17	338.3	4.00	3.48	3.02	2.57	2.16	1.78
3-40	1563	.86	.75	.65	.55	.46	.38	18	319.6	4.21	3.67	3.18	2.70	2.28	1.87
4-0	1433	.94	.82	.71	.60	.50	.42	19	302.9	4.45	3.89	3.36	2.86	2.41	1.98
4-20	1323	1.02	.89	.77	.65	.55	.45	20	287.9	4.70	4.09	3.55	3.00	2.54	2.09
4-40	1228	1.10	.96	.83	.70	.59	.48	22	262.0	5.16	4.44	3.84	3.30	2.80	2.29
5	1146	1.18	1.03	.89	.75	.63	.52	24	240.5	5.64	4.92	4.20	3.59	3.04	2.50
6	955.3	1.41	1.23	1.06	.90	.76	.62	26	222.3	6.07	5.29	4.58	3.88	3.29	2.70
7	819.0	1.65	1.44	1.24	1.05	.89	.73								

TABLE XI.
SHORT RADIUS CURVES

Radius Feet	Chord Feet	Central Angle	Deflection Angle	Deflection for 1 Foot
35	10	16-26	8-13	49.3
45	10	12-46	6-23	38.3
50	15	17-16	8-38	34.5
60	15	14-22	7-11	28.8
75	15	11-30	5-45	23.0
100	20	11-30	5-45	17.3
120	20	9-34	4-47	14.3
150	20	7-39	3-49	11.5
190	25	7-32	3-46	9.15
200	25	7-10	3-35	8.6
225	25	6-25	3-12	7.7
240	25	5-58	2-59	7.2
250	25	5-44	2-52	6.9
275	25	5-12	2-36	6.2
288	50	9-58	4-59	6.0
300	50	9-32	4-46	5.7
350	50	8-12	4-06	4.9
376	50	7-40	3-50	4.6
400	50	7-10	3-35	4.3
410	50	7-00	3-30	4.2

To find length of curve divide angle from P. C. to P. T. by central angle of chord, and multiply by length of chord.

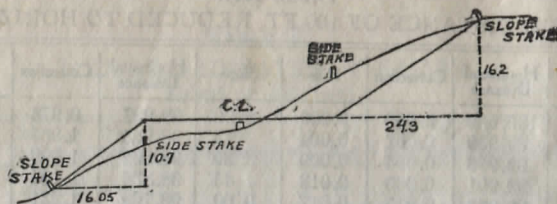
TABLE XII.
INCLINED DISTANCE OF 100 FT. REDUCED TO HORIZONTAL

Slope	Horizontal Distance	Correction	Rise	Slope	Horizontal Distance	Correction	Rise
0°00'	100.000	0.000	0.000	8°00'	99.027	0.973	0.139
15'	99.999	0.001	0.004	15'	98.965	1.035	0.143
30'	99.996	0.004	0.009	30'	98.902	1.098	0.148
45'	99.991	0.009	0.013	45'	98.836	1.164	0.152
1 00	99.985	0.015	0.017	9 00	98.769	1.231	0.156
15	99.976	0.024	0.022	15	98.700	1.300	0.161
30	99.966	0.034	0.026	30	98.629	1.371	0.165
45	99.953	0.047	0.031	45	98.556	1.444	0.169
2 00	99.939	0.061	0.035	10 00	98.481	1.519	0.174
15	99.923	0.077	0.039	15	98.404	1.596	0.178
30	99.905	0.095	0.044	30	98.325	1.675	0.182
45	99.885	0.115	0.048	45	98.245	1.755	0.187
3 00	99.863	0.137	0.052	11 00	98.163	1.837	0.191
15	99.839	0.161	0.057	15	98.079	1.921	0.195
30	99.813	0.187	0.061	30	97.992	2.008	0.199
45	99.786	0.214	0.065	45	97.905	2.095	0.204
4 00	99.756	0.244	0.070	12 00	97.815	2.185	0.208
15	99.725	0.275	0.074	15	97.723	2.277	0.212
30	99.692	0.308	0.078	30	97.630	2.370	0.216
45	99.657	0.343	0.083	45	97.534	2.466	0.221
5 00	99.619	0.381	0.087	13 00	97.437	2.563	0.225
15	99.580	0.420	0.092	15	97.338	2.662	0.229
30	99.540	0.460	0.096	30	97.237	2.763	0.233
45	99.497	0.503	0.100	45	97.134	2.866	0.238
6 00	99.453	0.548	0.105	14 00	97.030	2.970	0.243
15	99.406	0.594	0.109	15	96.923	3.077	0.246
30	99.357	0.643	0.113	30	96.815	3.185	0.250
45	99.307	0.693	0.118	45	96.705	3.295	0.255
7 00	99.255	0.745	0.122	15 00	96.593	3.407	0.259
15	99.200	0.800	0.126	15	96.479	3.521	0.263
30	99.144	0.856	0.131	30	96.363	3.637	0.267
45	99.087	0.913	0.135	45	96.246	3.754	0.271

For each foot take one one-hundredth of each reading.

TABLE XIII.
MINUTES IN DECIMALS OF A DEGREE.

0 30"	.00833	10' 30"	.17500	20' 30"	.34167	30' 10"	.50833	40' 30"	.67500	50' 10"	.84167
1 00	.01667	11 00	.18333	21 00	.35000	31 00	.51667	41 00	.68333	51 00	.85000
2 00	.02500	30	.19167	30	.35833	30	.52500	40	.69167	30	.85833
3 00	.03333	12 00	.20000	22 00	.36667	32 00	.53333	42 00	.70000	52 00	.86667
30	.04167	30	.20833	30	.37500	30	.54167	30	.70833	30	.87500
3 00	.05000	13 00	.21667	23 00	.38333	33 00	.55000	43 00	.71667	53 00	.88333
30	.05833	30	.22500	30	.39167	30	.55833	30	.72500	30	.89167
4 00	.06667	14 00	.23333	24 00	.40000	34 00	.56667	44 00	.73333	54 00	.90000
30	.07500	30	.24167	30	.40833	30	.57500	30	.74167	30	.90833
5 00	.08333	15 00	.25000	25 00	.41667	35 00	.58333	45 00	.75000	55 00	.91667
30	.09167	30	.25833	30	.42500	30	.59167	30	.75833	30	.92500
6 00	.10000	16 00	.26667	26 00	.43333	36 00	.60000	46 00	.76667	56 00	.93333
30	.10833	30	.27500	30	.44167	30	.60833	30	.77500	30	.94167
7 00	.11667	17 00	.28333	27 00	.45000	37 00	.61667	47 00	.78333	57 00	.95000
30	.12500	30	.29167	30	.45833	30	.62500	30	.79167	30	.95833
8 00	.13333	18 00	.30000	28 00	.46667	38 00	.63333	48 00	.80000	58 00	.96667
30	.14167	30	.30833	30	.47500	30	.64167	30	.80833	30	.97500
9 00	.15000	19 00	.31667	29 00	.48333	39 00	.65000	49 00	.81667	59 00	.98333
30	.15833	30	.32500	30	.49167	30	.65833	30	.82500	30	.99167
10 00	.16667	20 00	.33333	30 00	.50000	40 00	.66667	50 00	.83333	60 00	1.00000



DISTANCES FROM SIDE STAKES FOR CROSS-SECTIONING.

SLOPE 1 1/2 TO 1. ROADWAY OF ANY WIDTH.

	0	.1	.2	.3	.4	.5	.6	.7	.8	.9	
0	0 00	0 15	0 30	0 45	0 60	0 75	0 90	1 05	1 20	1 35	0
1	1 50	1 65	1 80	1 95	2 10	2 25	2 40	2 55	2 70	2 85	1
2	3 00	3 15	3 30	3 45	3 60	3 75	3 90	4 05	4 20	4 35	2
3	4 50	4 65	4 80	4 95	5 10	5 25	5 40	5 55	5 70	5 85	3
4	6 00	6 15	6 30	6 45	6 60	6 75	6 90	7 05	7 20	7 35	4
5	7 50	7 65	7 80	7 95	8 10	8 25	8 40	8 55	8 70	8 85	5
6	9 00	9 15	9 30	9 45	9 60	9 75	9 90	10 05	10 20	10 35	6
7	10 50	10 65	10 80	10 95	11 10	11 25	11 40	11 55	11 70	11 85	7
8	12 00	12 15	12 30	12 45	12 60	12 75	12 90	13 05	13 20	13 35	8
9	13 50	13 65	13 80	13 95	14 10	14 25	14 40	14 55	14 70	14 85	9
10	15 00	15 15	15 30	15 45	15 60	15 75	15 90	16 05	16 20	16 35	10
11	16 50	16 65	16 80	16 95	17 10	17 25	17 40	17 55	17 70	17 85	11
12	18 00	18 15	18 30	18 45	18 60	18 75	18 90	19 05	19 20	19 35	12
13	19 50	19 65	19 80	19 95	20 10	20 25	20 40	20 55	20 70	20 85	13
14	21 00	21 15	21 30	21 45	21 60	21 75	21 90	22 05	22 20	22 35	14
15	22 50	22 65	22 80	22 95	23 10	23 25	23 40	23 55	23 70	23 85	15
16	24 00	24 15	24 30	24 45	24 60	24 75	24 90	25 05	25 20	25 35	16
17	25 50	25 65	25 80	25 95	26 10	26 25	26 40	26 55	26 70	26 85	17
18	27 00	27 15	27 30	27 45	27 60	27 75	27 90	28 05	28 20	28 35	18
19	28 50	28 65	28 80	28 95	29 10	29 25	29 40	29 55	29 70	29 85	19
20	30 00	30 15	30 30	30 45	30 60	30 75	30 90	31 05	31 20	31 35	20
21	31 50	31 65	31 80	31 95	32 10	32 25	32 40	32 55	32 70	32 85	21
22	33 00	33 15	33 30	33 45	33 60	33 75	33 90	34 05	34 20	34 35	22
23	34 50	34 65	34 80	34 95	35 10	35 25	35 40	35 55	35 70	35 85	23
24	36 00	36 15	36 30	36 45	36 60	36 75	36 90	37 05	37 20	37 35	24
25	37 50	37 65	37 80	37 95	38 10	38 25	38 40	38 55	38 70	38 85	25
26	39 00	39 15	39 30	39 45	39 60	39 75	39 90	40 05	40 20	40 35	26
27	40 50	40 65	40 80	40 95	41 10	41 25	41 40	41 55	41 70	41 85	27
28	42 00	42 15	42 30	42 45	42 60	42 75	42 90	43 05	43 20	43 35	28
29	43 50	43 65	43 80	43 95	44 10	44 25	44 40	44 55	44 70	44 85	29
30	45 00	45 15	45 30	45 45	45 60	45 75	45 90	46 05	46 20	46 35	30
31	46 50	46 65	46 80	46 95	47 10	47 25	47 40	47 55	47 70	47 85	31
32	48 00	48 15	48 30	48 45	48 60	48 75	48 90	49 05	49 20	49 35	32
33	49 50	49 65	49 80	49 95	50 10	50 25	50 40	50 55	50 70	50 85	33
34	51 00	51 15	51 30	51 45	51 60	51 75	51 90	52 05	52 20	52 35	34
35	52 50	52 65	52 80	52 95	53 10	53 25	53 40	53 55	53 70	53 85	35
36	54 00	54 15	54 30	54 45	54 60	54 75	54 90	55 05	55 20	55 35	36
37	55 50	55 65	55 80	55 95	56 10	56 25	56 40	56 55	56 70	56 85	37
38	57 00	57 15	57 30	57 45	57 60	57 75	57 90	58 05	58 20	58 35	38
39	58 50	58 65	58 80	58 95	59 10	59 25	59 40	59 55	59 70	59 85	39
40	60 00	60 15	60 30	60 45	60 60	60 75	60 90	61 05	61 20	61 35	40
41	61 50	61 65	61 80	61 95	62 10	62 25	62 40	62 55	62 70	62 85	41
42	63 00	63 15	63 30	63 45	63 60	63 75	63 90	64 05	64 20	64 35	42
43	64 50	64 65	64 80	64 95	65 10	65 25	65 40	65 55	65 70	65 85	43
44	66 00	66 15	66 30	66 45	66 60	66 75	66 90	67 05	67 20	67 35	44
45	67 50	67 65	67 80	67 95	68 10	68 25	68 40	68 55	68 70	68 85	45
46	69 00	69 15	69 30	69 45	69 60	69 75	69 90	70 05	70 20	70 35	46
47	70 50	70 65	70 80	70 95	71 10	71 25	71 40	71 55	71 70	71 85	47
48	72 00	72 15	72 30	72 45	72 60	72 75	72 90	73 05	73 20	73 35	48
49	73 50	73 65	73 80	73 95	74 10	74 25	74 40	74 55	74 70	74 85	49
50	75 00	75 15	75 30	75 45	75 60	75 75	75 90	76 05	76 20	76 35	50

31 + 36.94
29 + 65.20

1 71.74

Computed by L. Leland Locke.

BM - 26" Maple
near S. Hendershotts 1185.42

N.E. Cor. W. Parafit Stone Culvert
Below Hendershotts 1177.20

BM # 25
+ ON bottom Stone foundation S.H.
1261.24

PLEASE RETURN TO
GEAUGA COUNTY ENGINEER
COURT HOUSE
CHARDON, O.
PHONE 250-X

